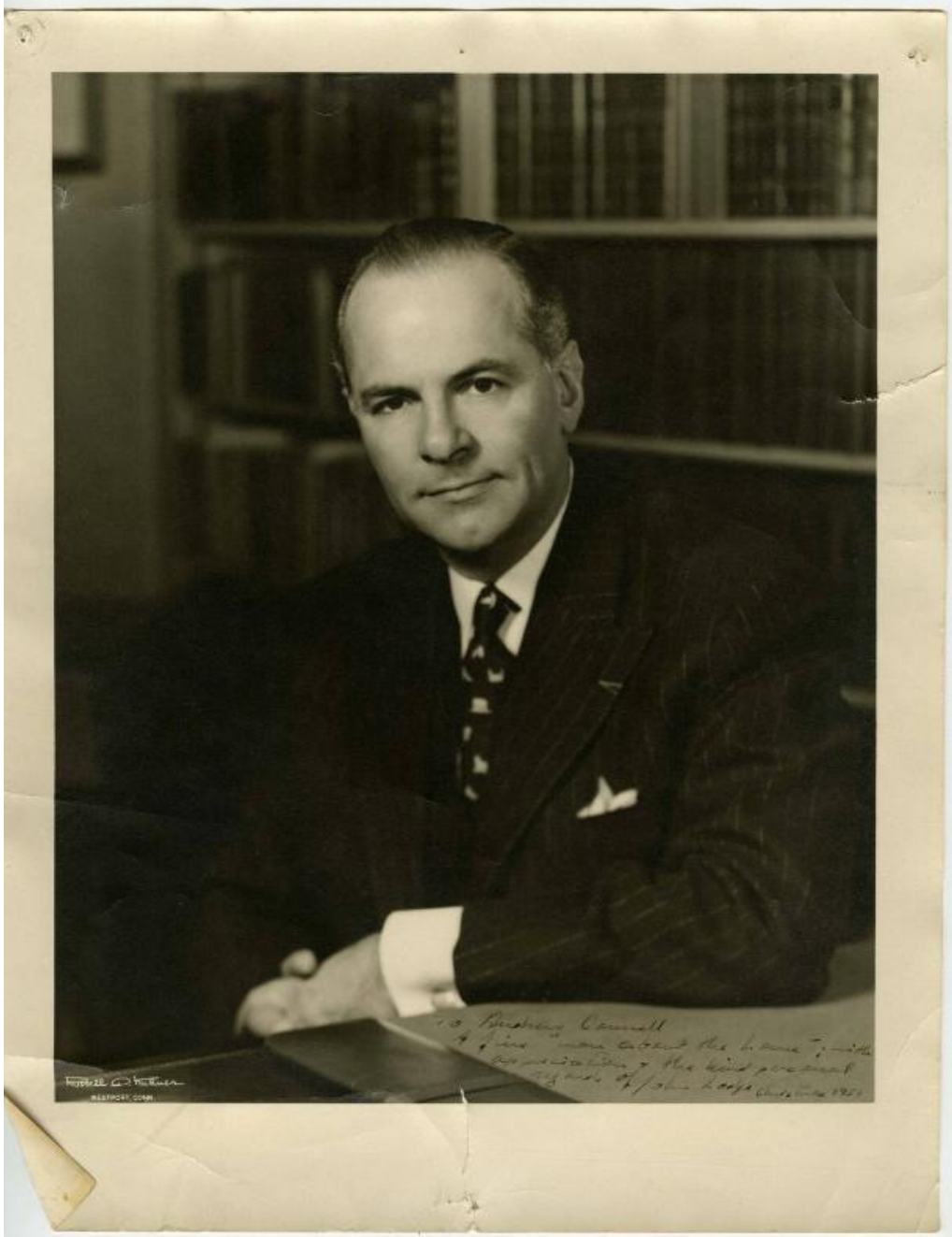


Basic Detail Report



Title Gov. John Davis Lodge

Date 1951

Primary Maker John Davis Lodge

Medium Photography; silver gelatin print on paper

Description Black and white portrait of Governor John Davis Lodge with a handwritten note to Andrew Connell.

Basic Detail Report

Dimensions Primary Dimensions: $13 \frac{7}{8} \times 10 \frac{7}{8}$ in. (35.2×27.6 cm)