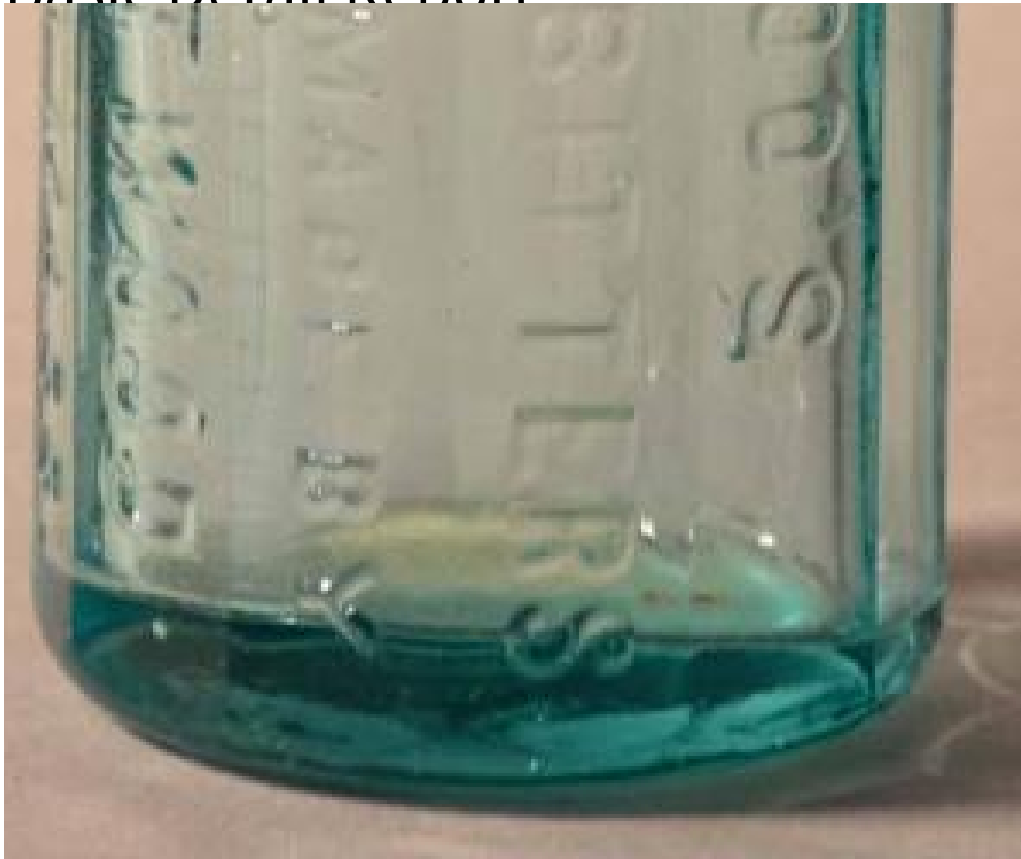


Basic Detail Report



Basic Detail Report



Title Medicine Bottles

Primary Maker Dr. Cyrus Pendleton

Medium glass

Description Large-size, round medicine bottles. Five bottles have a blue-green, transparent color and one bottle has a yellow tint, but it mostly transparent.

Originally stored in an apothecary chest owned by Dr. Cyrus Pendleton of Hebron, Conn. Hand-blown glass. (.12) Embossed on front of bottle:

"ATWOOD'S/ JAUNDICE BITTERS/ FORMERLY MADE BY/ MOSES ATWOOD/
GEORGETOWN, MASS." (.13) No embossing or identification on bottle,

circumference of bottle is a dodecagon. (.14) No embossing or identification on

bottle, smooth surface, wide mouth. (.15) No identification on bottle. Has

embossed swirl pattern down bottle. (.16) No embossing or identification on

Basic Detail Report

bottle, smooth surface, small mouth. (.17) Embossed on front of bottle:

"ATWOOD'S/ JANNAICE BITTERS/ FORMERLY MADE BY/ MOSES ATWOOD/

GEORGETOWN, MASS." (.18) No embossing or identification on bottle, smooth

surface, wide circumference, narrow mouth. (.19) Blank, brown sticker label on

front of bottle, smooth surface, wide mouth.

Dimensions Primary Dimensions ((.12) height x diameter of base): $6 \frac{1}{8} \times 2 \frac{1}{8}$

/8in. (15.6×5.4 cm) Primary Dimensions ((.13) height x diameter of base): $5 \frac{7}{8}$

$\times 1 \frac{7}{8}$ in. (14.9×4.8 cm) Primary Dimensions ((.14) height x diameter of base): 5

$\frac{1}{4} \times 2 \frac{1}{4}$ in. (13.3×5.7 cm) Primary Dimensions ((.15) height x diameter of

base): $6 \times 2 \frac{1}{8}$ in. (15.2×5.4 cm) Primary Dimensions ((.16) height x diameter of

base): $5 \frac{7}{8} \times 1 \frac{5}{8}$ in. (14.9×4.1 cm) Primary Dimensions ((.17) height x

diameter of base): 6×2 in. (15.2×5.1 cm) Primary Dimensions ((.18) height x

diameter of base): $4 \frac{5}{8} \times 2$ in. (11.7×5.1 cm) Primary Dimensions ((.19) height x

diameter of base): $4 \frac{5}{8} \times 1 \frac{3}{4}$ in. (11.7×4.4 cm)