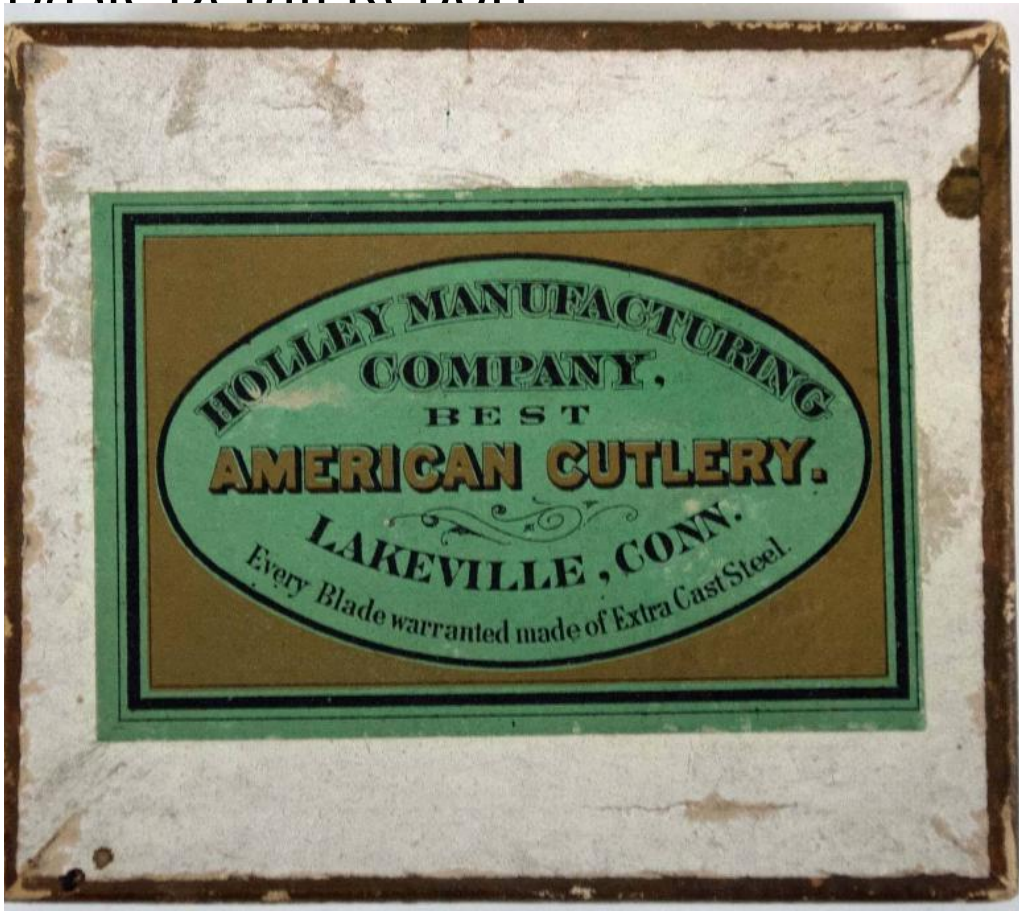


Basic Detail Report



Title Holley Manufacturing Co. Pocket Cutlery

Primary Maker Holley Manufacturing Company

Medium steel; cardboard

Description Pocket cutlery. Three knives with blades made of extra cast steel and a spoon in original box from Holley Manufacturing Company in Lakeville, Conn. (a) box (b) pocket spoon (c) large pocket blade (d) medium pocket blade (e) small pocket blade

Dimensions Primary Dimensions ((a) box overall height x width x depth): $1 \times 3 \frac{3}{4} \times 3 \frac{3}{8}$ in. ($2.5 \times 9.5 \times 8.6$ cm) Primary Dimensions ((b) overall length of spoon): $3 \frac{3}{4}$ in. (9.5 cm) Primary Dimensions ((c) overall length x width of knife): $3 \frac{5}{8} \times \frac{3}{4}$ in. (9.2×1.9 cm) Primary Dimensions ((d) overall length x width of

Basic Detail Report

knife): $3 \frac{1}{8} \times \frac{5}{8}$ in. (7.9×1.6 cm) Primary Dimensions ((e) overall length x

width of knife): $2 \frac{3}{8} \times \frac{5}{8}$ in. (6×1.6 cm)