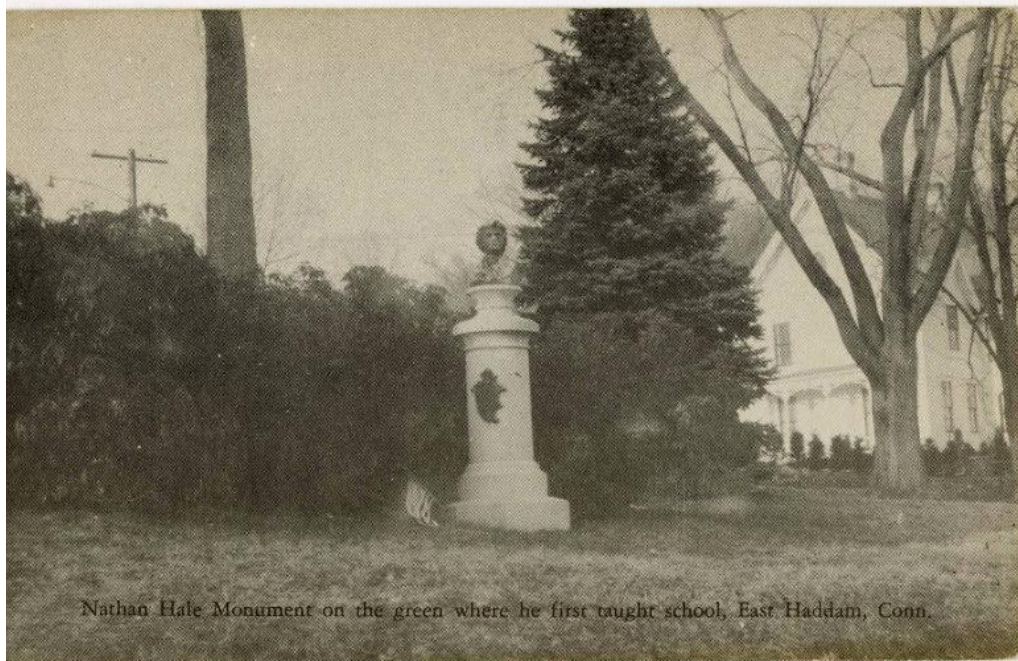


Basic Detail Report



Nathan Hale Monument on the green where he first taught school, East Haddam, Conn.

Title East Haddam postcards

Date 1900-1920

Primary Maker Bond Manufacturing Co.

Medium ink on paper board

Description Three black and white photographic postcards of scenes in East Haddam, Connecticut, and published by Bond Manufacturing Company, 2 Eld Street, New Haven. .1 Nathan Hale Monument on the green where he first taught school, East Haddam, Conn. Monument is in the center with a white house behind and to the right. .2 Nathan Hale School House and Joseph Spencer Monument, East Haddam, Conn. Flag pole in the center of the picture behind which appears the schoolhouse and to the left of which is the monument topped by an eagle. Joseph Spencer was a Major-General of the Continental Troops, member of the Council of Safety, a Congressman, judge, Deputy, Deacon, and farmer of East Haddam. .3 Rathbun Memorial Library, East Haddam, Conn.

Basic Detail Report

Dimensions Primary Dimensions: (Height) 3 1/2 x (Width) 5 1/2in. (8.9 x 14cm)