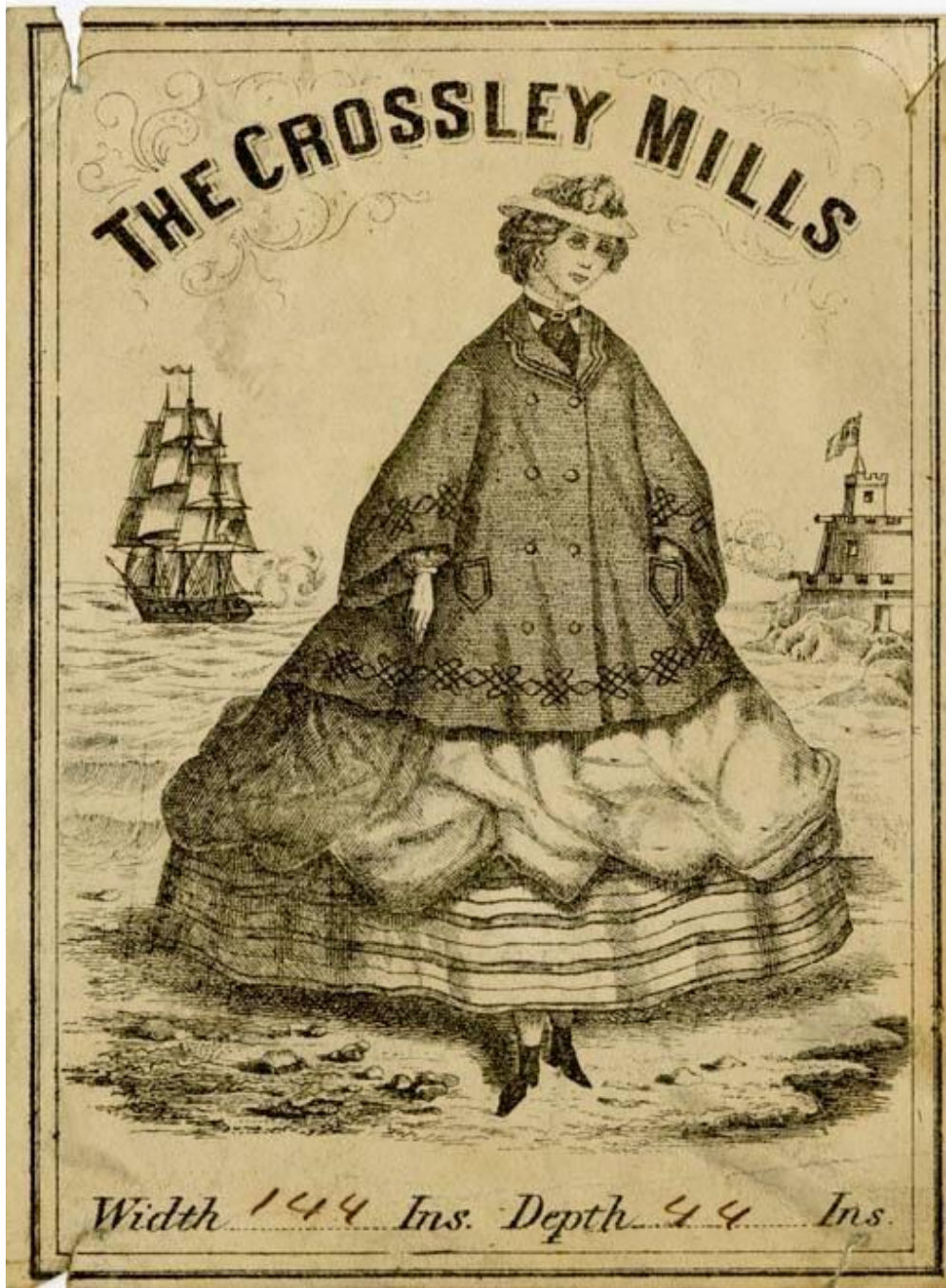


# Basic Detail Report



**Title** The Crossley Mills

**Date** 1850-1870

**Primary Maker** The Crossley Mills

# Basic Detail Report

Description Label for a product made by The Crossley Mills in Haddam,

Connecticut, with an image of a woman posed in between a ship and a fort

underneath the business name.

Dimensions Primary Dimensions (height x width):  $4 \frac{7}{8} \times 3 \frac{5}{8}$ in. ( $12.4 \times 9.2$ cm)