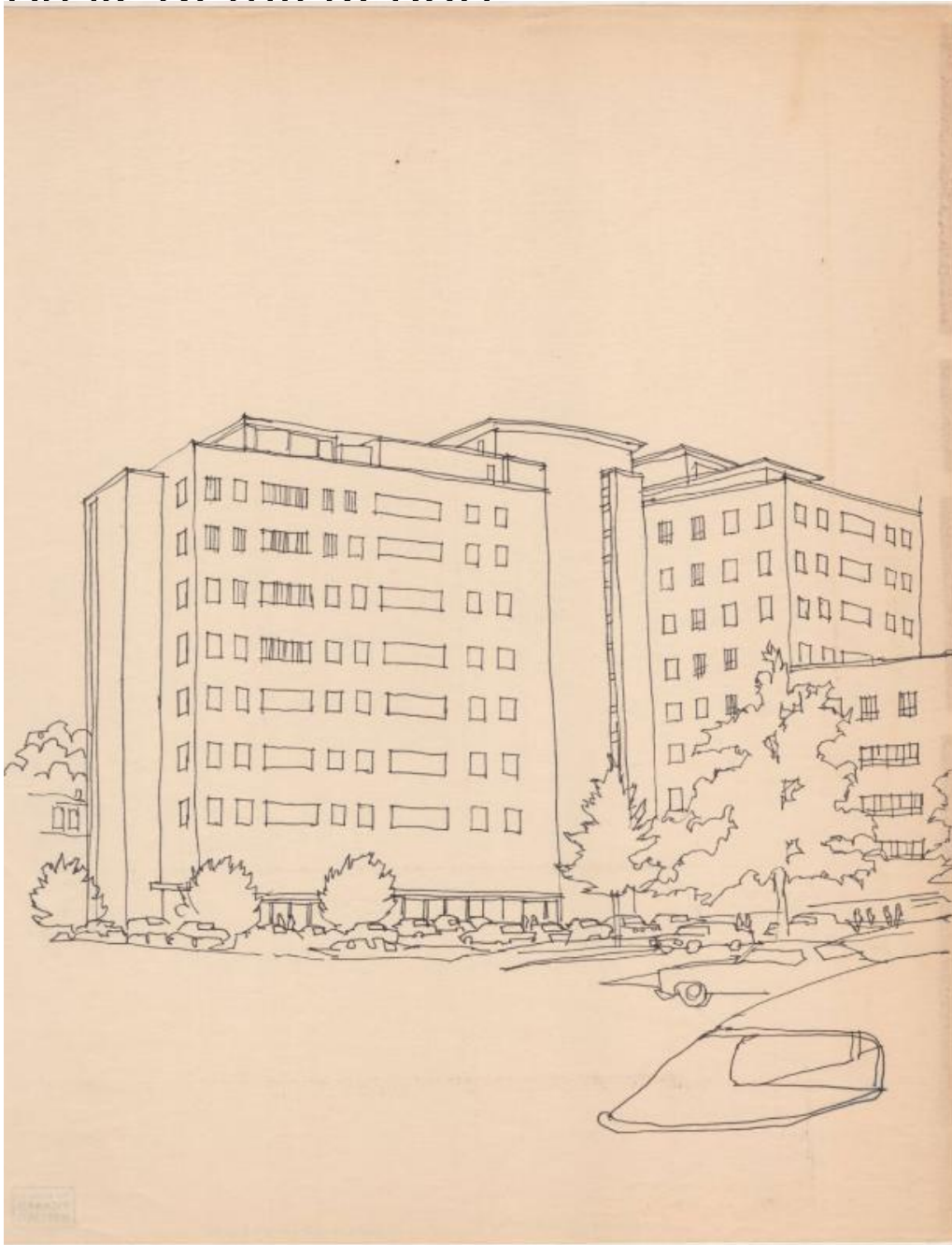


# Basic Detail Report



**Title** Hartford Hospital, Hartford, Connecticut

Date 1970

Primary Maker Richard Welling

Medium Drawing; black marker on paper

Description Drawing of Hartford Hospital campus in Hartford, Connecticut, from a parking lot across from the main entrance. There are automobiles in the

# Basic Detail Report

foreground, and another parking lot is visible on the right. Pedestrians are shown on the sidewalks around the buildings.

Dimensions Sheet (height x width): 17 7/8 x 37 3/4in. (45.4 x 95.9cm)