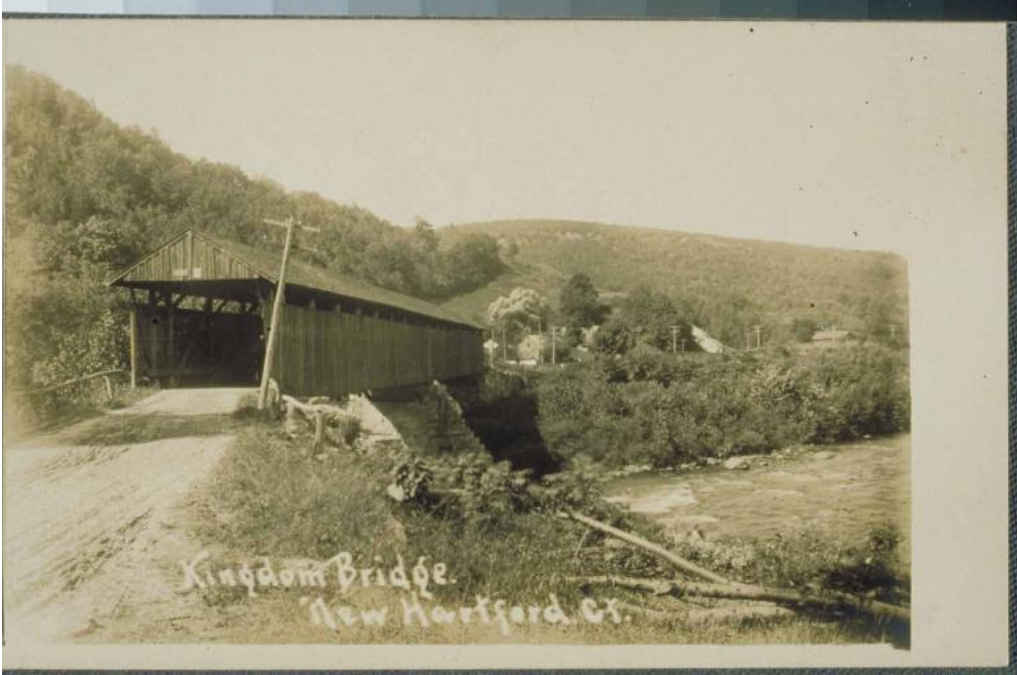


# Basic Detail Report



**Title Kingdom Bridge, New Hartford**

Date about 1905

Primary Maker H. P. Foote

Medium Photography; gelatin silver print on postcard

Description Dirt road crosses a wooden covered bridge resting on stone abutments. Rapids and rocks are in the Farmington River on the right. Utility poles line the road in the background. This is probably the Albany Turnpike, later Route 44. Wooded hills are in the distance.

Dimensions Primary Dimensions (overall height x width): 3 9/16 x 5 1/2in. (9 x 14cm)