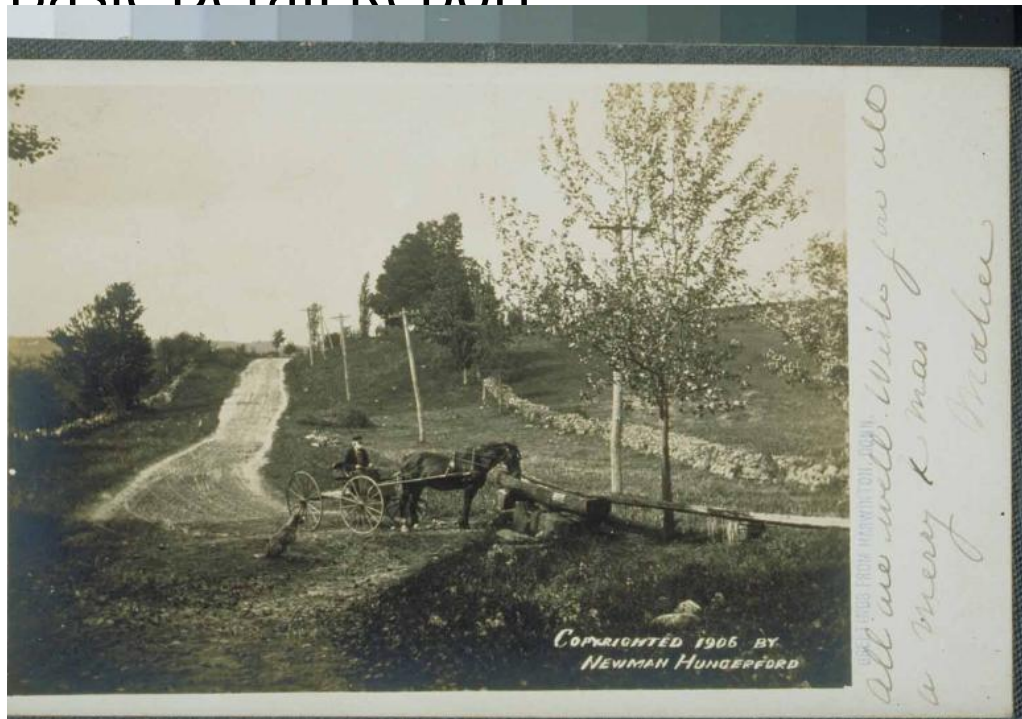


# Basic Detail Report



## Title Horse drinking from a watering trough, Harwinton

Date 1906

Primary Maker Newman Hungerford

Medium Photography; gelatin silver print on postcard

Description A man sits in a horse-drawn carriage. The horse is drinking from a wooden watering trough, evidently a hollowed-out log, beside a dirt road. A dog sits nearby. Utility poles and stone walls line the road. Fields and pastures are on either side. Some of the trees appear to be poplars.

Dimensions Primary Dimensions (overall height x width): 3 9/16 x 5 1/2in. (9 x 14cm)