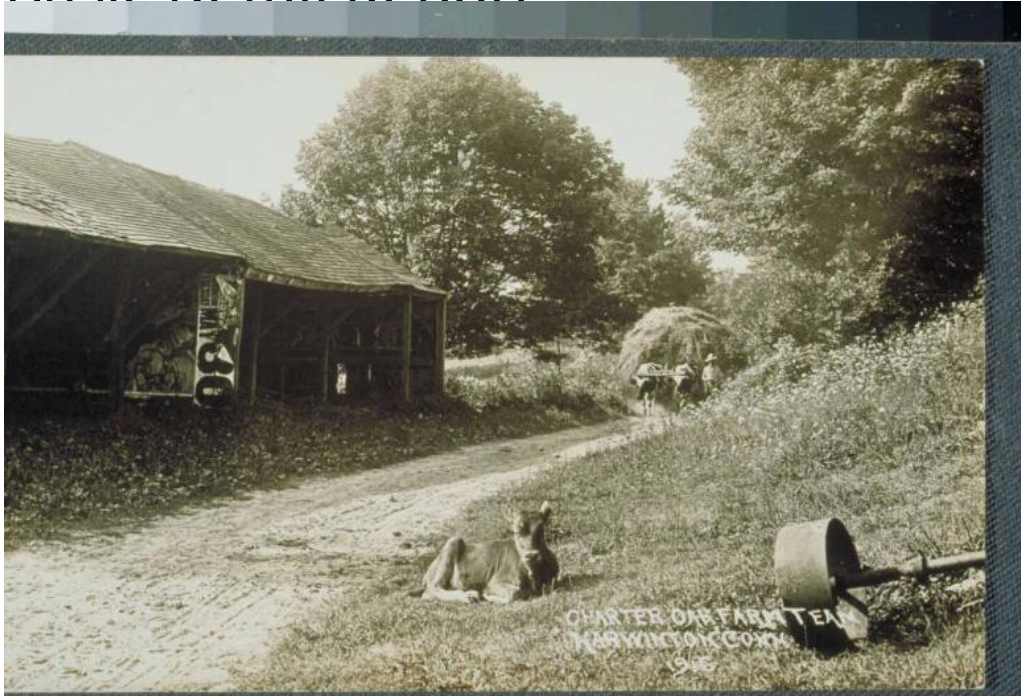


Basic Detail Report



Title Charter Oak Farm team, Harwinton

Date 1916

Primary Maker L. C. Crossman

Medium Photography; gelatin silver print on postcard

Description A wooden barn or horse shed is on the left. A poster or broadside on its wall reads in part: "Harwinton / May 30." A calf lies in the grass at the right. A man directs an ox team pulling a wagon loaded with hay along the dirt lane.

Dimensions Primary Dimensions (overall height x width): 3 9/16 x 5 1/2in. (9 x 14cm)