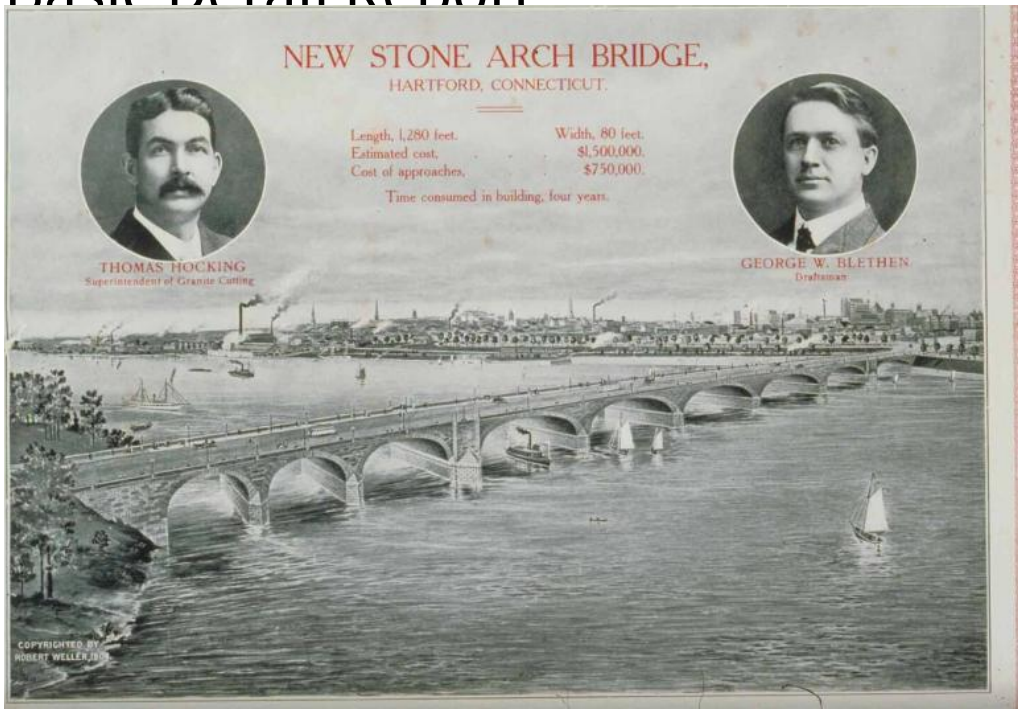


Basic Detail Report



Title New Stone Arch Bridge, Hartford, Connecticut

Date 1904

Primary Maker Robert Weller

Medium Photomechanical reproduction; printer's ink on paper

Description Advertisement for the projected Connecticut River bridge between Hartford and East Hartford. The bridge is shown as if completed with trolley cars and horse-drawn vehicles on it. Steamboats and sailing vessels are on the river.

The Hartford skyline is in the background.

Dimensions 24 x 32 cm.