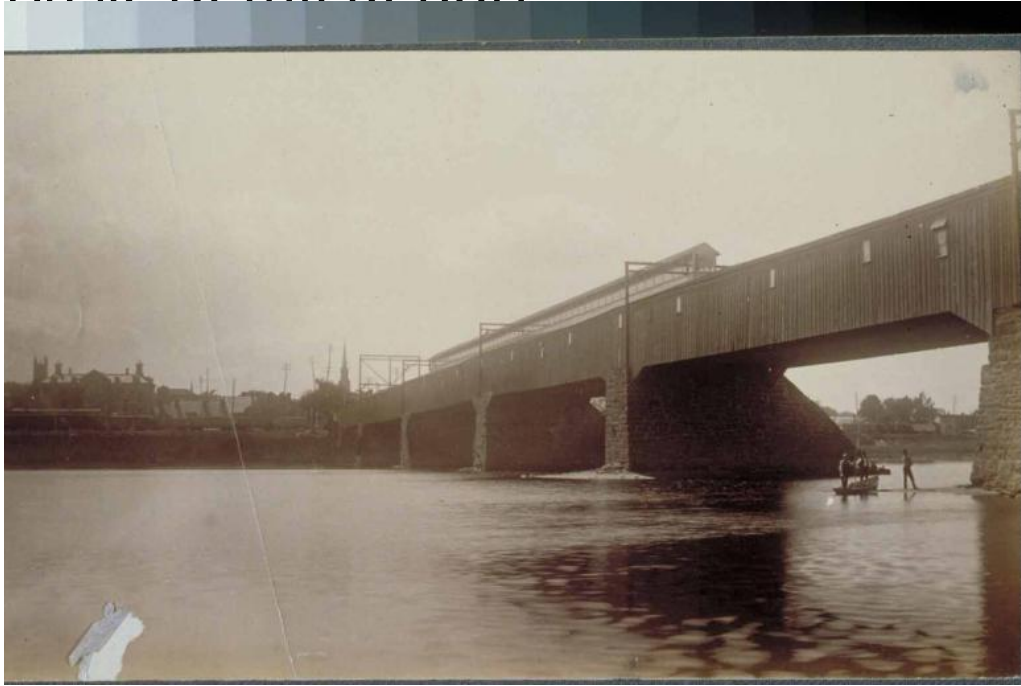


Basic Detail Report



Title Hartford Covered Bridge, looking west

Date before 1895

Primary Maker Unknown

Medium Photography; gelatin silver print on paper

Description View across the Connecticut River towards the Hartford shore. The wooden covered bridge is on the right, supported by stone abutments. The wooden framework at each abutment carries electrical wires. Two men stand in a small boat or skiff near the East Hartford shore. A third man stands on a spit. Utility poles and the steeples of Christ Church and the Fourth Congregational Church appear on the Hartford skyline in the distance. Freight cars line the tracks of the Connecticut Valley Railroad which run along the embankment.

Dimensions Primary Dimensions (overall height x width): 4 3/4 x 7 1/2in. (12 x 19cm)