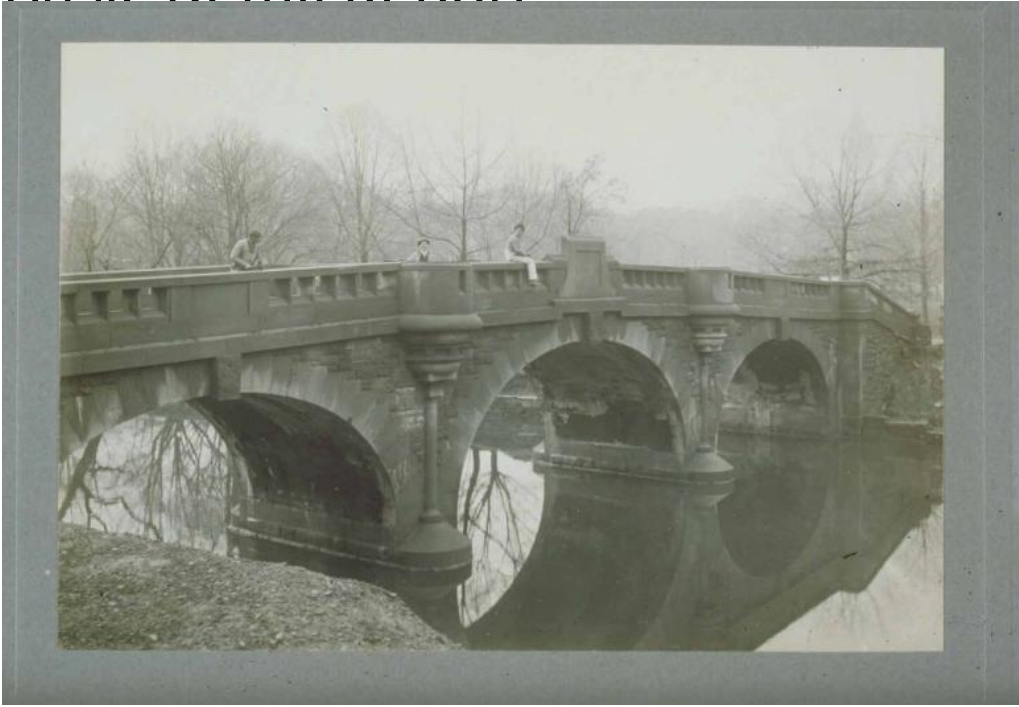


Basic Detail Report



Title Workmen on Hoadley Memorial Bridge, Hartford

Date 1910

Primary Maker J. C. Dexter Photo Company

Medium Photography; gelatin silver print on paper

Description Three men on a triple-arched brownstone bridge. Two men wear overalls. One sits on the stone railing of the bridge. The other holds a hammer or mallet. The bridge is reflected in the Park River. The dome of the Connecticut State Capitol is visible in the right background.

Dimensions Primary Dimensions (overall height x width): 4 3/4 x 6 11/16in. (12 x 17cm)