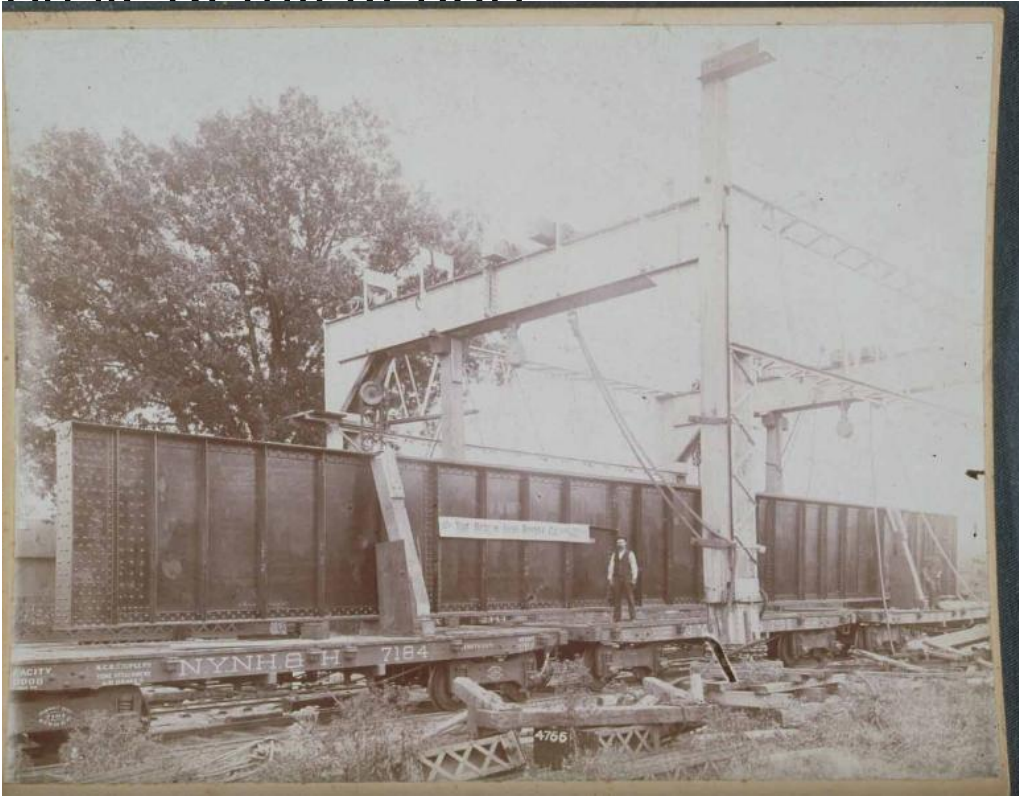


Basic Detail Report



Title Berlin Bridge Company: Bridge Component on Freight Cars, East Berlin

Date about 1895

Primary Maker Unknown

Medium Photography; gelatin silver print on paper on cardboard mount

Description A large piece of iron that has been riveted together rests on three flat cars. Numbers are chalked on it. A sign reads: "From The Berlin Iron Bridge Co. East Berlin Conn." Wooden beams hold it in place. Two men stand on the cars, which have signs that read: Capacity / ...0000 / May 98 / M.C. B. Couplers / Yoke Attachment / Air Brakes / N.Y.N.H. & H. 7184 / Length 33 ft. / Weight 21800." A structure of iron girders and wooden beams with attached ropes, chains and

Basic Detail Report

pulleys has evidently been used to place the iron component on the flat cars.

Weeds grow along the tracks in the foreground. Inscribed on back: "Berlin

Bridge Co."

Dimensions Primary Dimensions (overall height x width): 7 7/8 x 9 13/16in. (20 x 25cm)