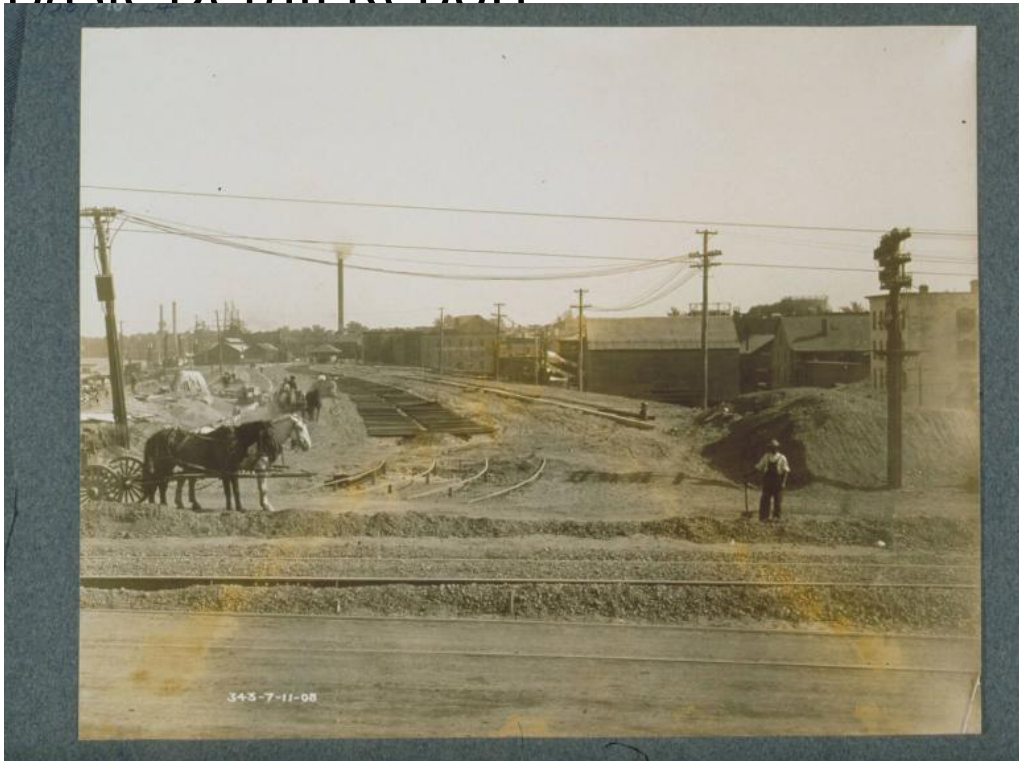


Basic Detail Report



Title Bulkeley Bridge Construction: Looking South along Railroad

Tracks, Hartford, July 11, 1908

Date 1908

Primary Maker Unknown

Medium Photography; gelatin silver print on paper

Description A man wearing overalls and a hat stands holding a shovel at the right. Tracks, evidently trolley tracks, are in the foreground. Railroad tracks run along the embankment in the background towards a railroad station. Utility poles line the tracks. Railroad ties are at the left. A fire hydrant is at the right near a pile of dirt. Brick industrial and commercial buildings are at the far right and in the background. Smoke pours from a smokestack. The dome of the Colts Fire Arms Manufacturing Company is in the distance near two additional smokestacks. The Connecticut River is at the left. A steamboat is at the dock. A

Basic Detail Report

horse-drawn wagon is in the left foreground with another wagon behind it,
blurred from movement.

Dimensions Primary Dimensions (overall height x width): 7 7/8 x 9 13/16in. (20 x
25cm)