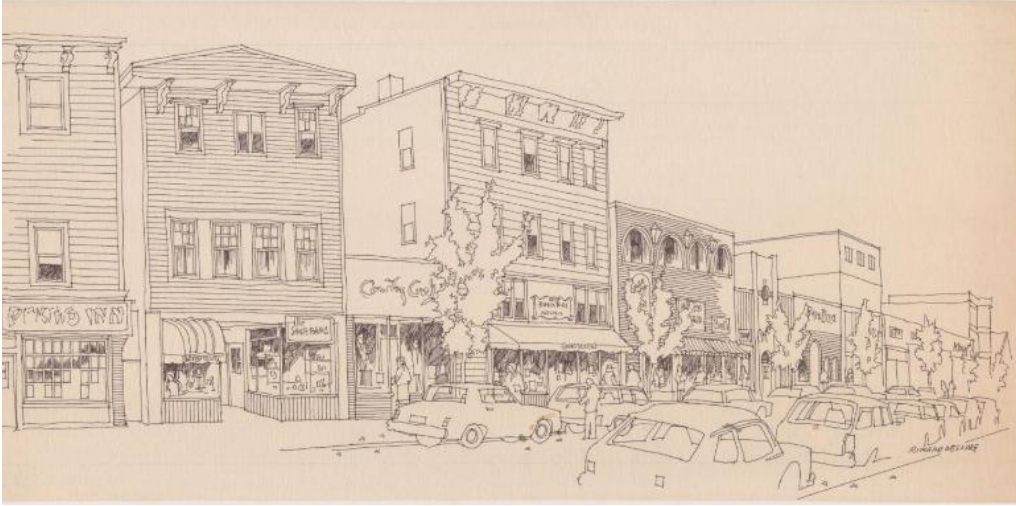


Basic Detail Report



Title Main Street, Westport

Date 1978-1990

Primary Maker Richard Welling

Medium Drawing; black ink on paper

Description Drawing of the buildings along Main Street in Westport, Connecticut.

They are a mix of architectural styles. In the center is the Belden Block at 27

Main, and the building in the distance with the three windows on its top story is

the old Westport Volunteer Fire Department Engine House at 57 Main.

Automobile and pedestrian traffic is depicted.

Dimensions Sheet (height x width): 10 1/2 x 22in. (26.7 x 55.9cm)