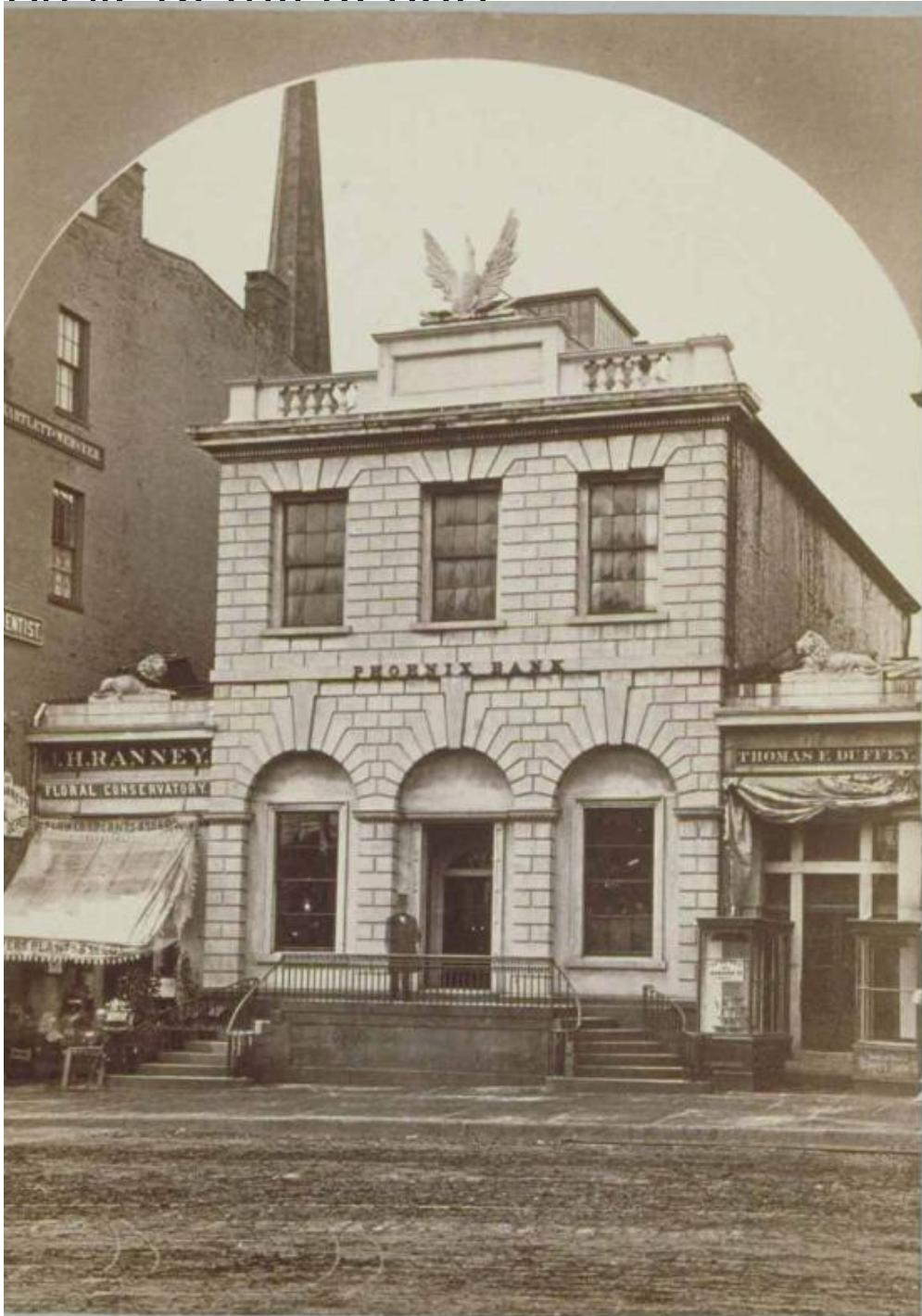


Basic Detail Report



Title Phoenix National Bank, Main Street, Hartford

Date probably 1874

Primary Maker F. D. Berry

Medium Photography; albumen print on paper on cardboard mount

Basic Detail Report

Description Two story brick bank building with what appears to be a dressed

stone facade and one-story wings. A sculpture of a phoenix surmounts the roof.

Sculptured lions lie on the roofs of the side pavilions. A man in a top hat stands

on the porch. A sign on the bank reads: "Phoenix Bank." Signs on the left

pavilion read: "J. H. Ranney / floral Conservatory / Flowers, Plants & Seeds." A

sign on an awning reads: "Flowers, Plants & Seeds." Signs on the adjoining brick

building read: "J.H. Ranney's / East Hartford / Floral Depot." A sign on the right

pavilion reads: "Thomas F. Duffey." Signs on showcases in front of the shop

read: "T.F. Duffey / has / removed to / 243 Main St...." and "Thomas F. Duffey /

Boots Shoes ? & Rubbers."

Dimensions Primary Dimensions (overall height x width): 5 7/8 x 4 5/16in. (15 x

11cm)