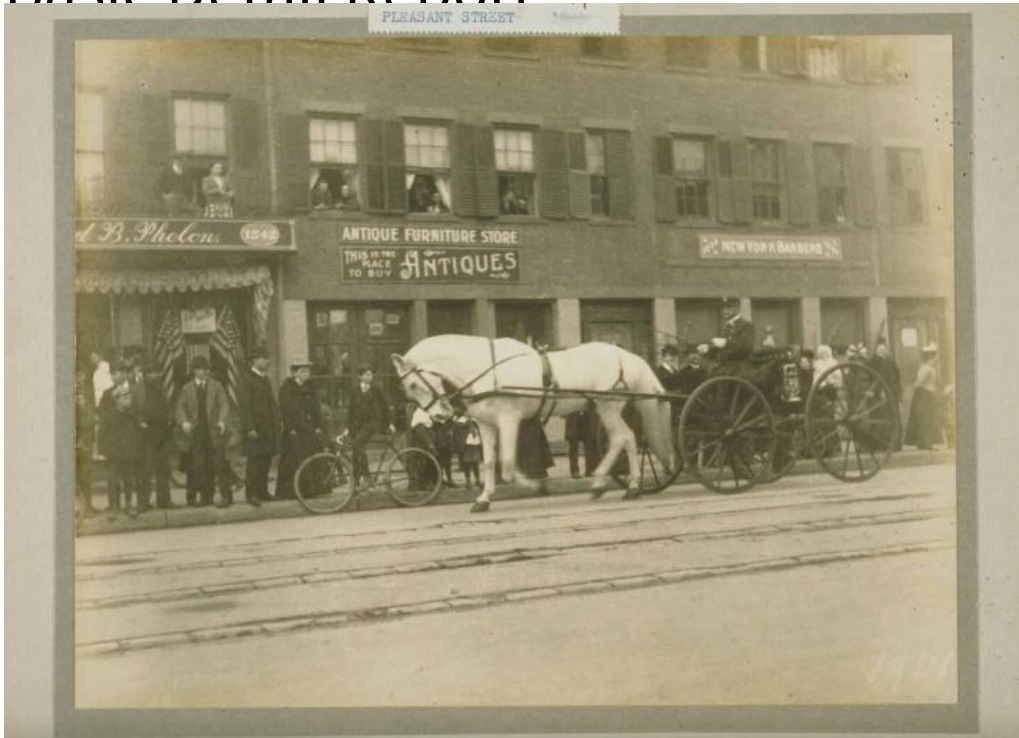


Basic Detail Report



Title Chief Henry J. Eaton and his White Horse Chief, Main Street,

Hartford

Date 1901

Primary Maker Harvey & Lewis

Medium Photography; gelatin silver print on paper on cardboard mount

Description Man driving a white horse drawing a carriage, apparently in a parade. He wears a uniform, cap and gloves and holds a whip. Men, women and boys line the sidewalk. One woman holds an infant. A boy rides a bicycle. A brick commercial building has signs that read: "[Alfre]d B. Phelan 1242" "Antique Furniture Store / This is the / place to buy antiques" "1234 New York Barbers 1234" "Egg / Nog / To-day." Men and women look out of windows with louvered shutters. An awning is over the storefront at the left, which is decorated with American flags. Trolley tracks are in the street.

Basic Detail Report

Dimensions Primary Dimensions (overall height x width): 7 7/8 x 9 13/16in. (20 x 25cm)