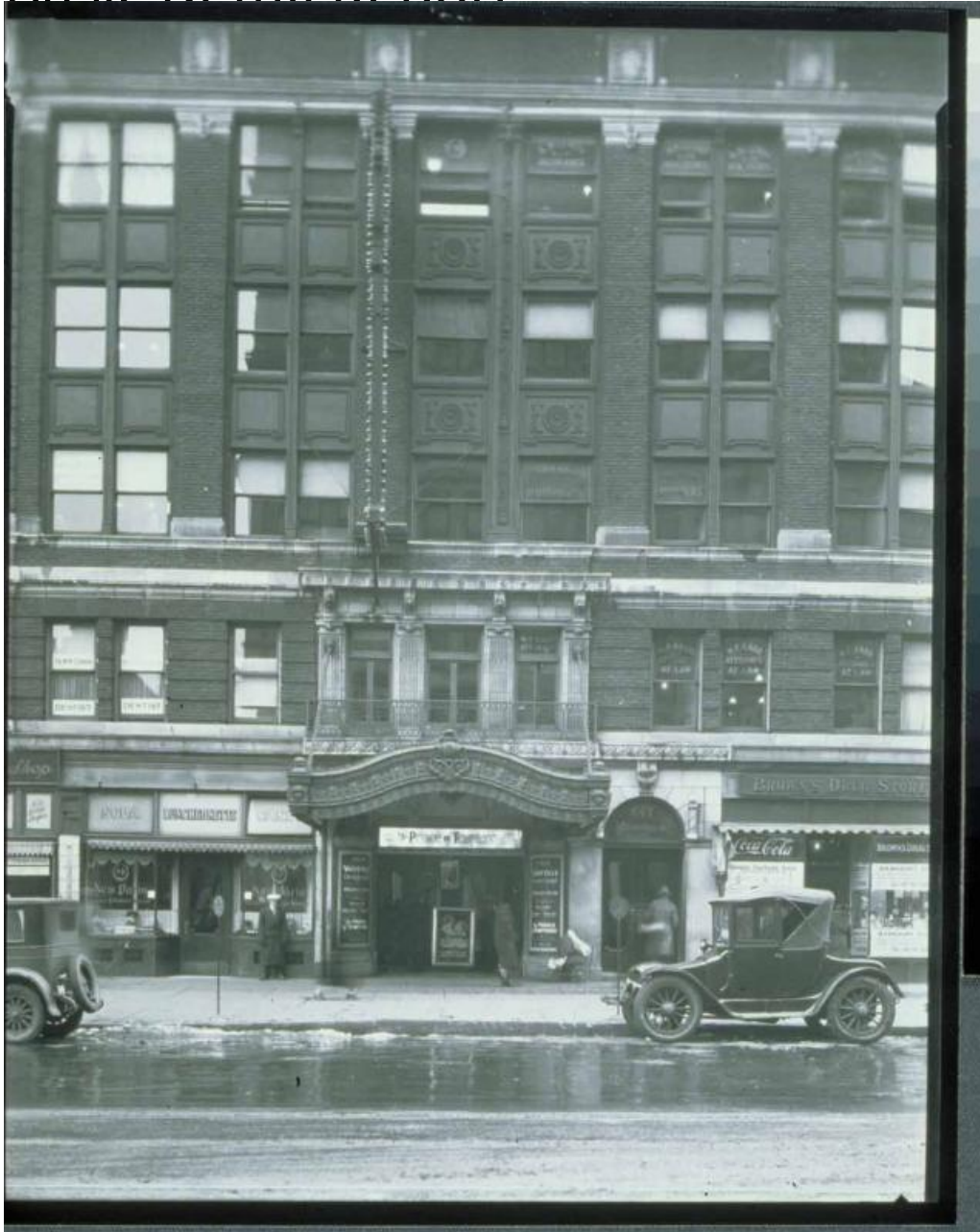


Basic Detail Report



Title Entrance to the New Palace Theatre, D'Esopo Building, 645-647

Main Street, Hartford

Date 1920-1925

Primary Maker Unknown

Medium Photography; gelatin silver print on paper

Basic Detail Report

Description Theater, shops and offices in a brick commercial building. Signs

read: "New Paris / Patisserie et Confiserie Francaise" "Fancy / Fruit / Baskets"

"Strawberries" "Pecans" "647 / D'Esopo / Building" "Brown's Drug Store" "Coca-

Cola" "Greatest Package Sale / Ever Held in Hartford" "Bankrupt Stock" "Dr. M.

N. Cohen / Dentist" "N.F. Rago / Attorney at Law." Theater posters advertise: "All

this / week / The Prince of Tempters / Lois Moran / Ben Lyon / Lya De Putti / Ian

Keith" "Poli's / Vaudeville / George Lloyd / Miniature Review." The edge of a

three-story sign, with electric lights on it, protrudes above the entrance. A man

in an overcoat and cap stand on the sidewalk. Another man and woman are

blurred from movement. A wicker baby carriage is near the theater entrance.

Two automobiles are parked on the street which is wet and has snow on it.

Dimensions Primary Dimensions (overall height x width): 10 1/4 x 8 1/4in. (26 x

21cm)