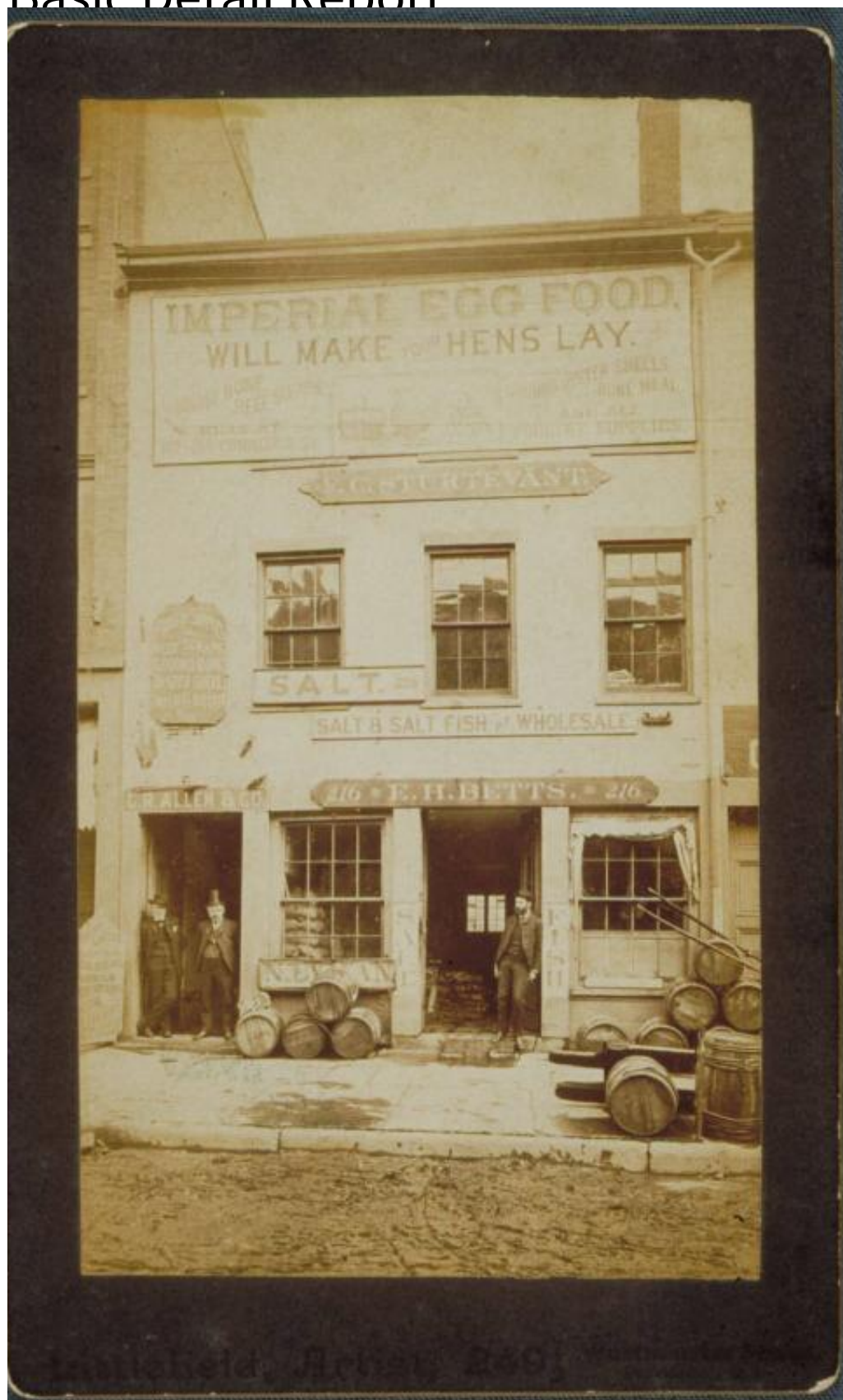


Basic Detail Report



Title Businesses at 216 State Street, Hartford

Basic Detail Report

Date about 1885

Primary Maker Littlefield

Medium Photography; albumen print on paper on cardboard mount

Description Three men pose in front of a commercial building or warehouse. All wear suits and have beards or mustaches. One man wears a top hat. Barrels are piled on the sidewalk. Sacks are visible through a window. Signs read: "Imperial Egg Food / Will make your hens lay. / Ground Bone / Beef Scraps / Ground Oyster Shells / Bone Meal / and all / Poultry Supplies / Mills at 162-164 Commerce St." "F.C. Sturtevant." "Poultry Supplies / Beef Scraps / Ground Bone / Oyster Shell / Imperial Egg Food." "Salt. 216" "Salt & Salt Fish at Wholesale." "C.R. Allen & Co." "216. E.H. Betts. 216." "N. Lyman." "Sale" "Fish." The street in front of the building is muddy and rutted.

Dimensions Primary Dimensions (overall height x width): 7 1/2 x 4 5/16in. (19 x 11cm)