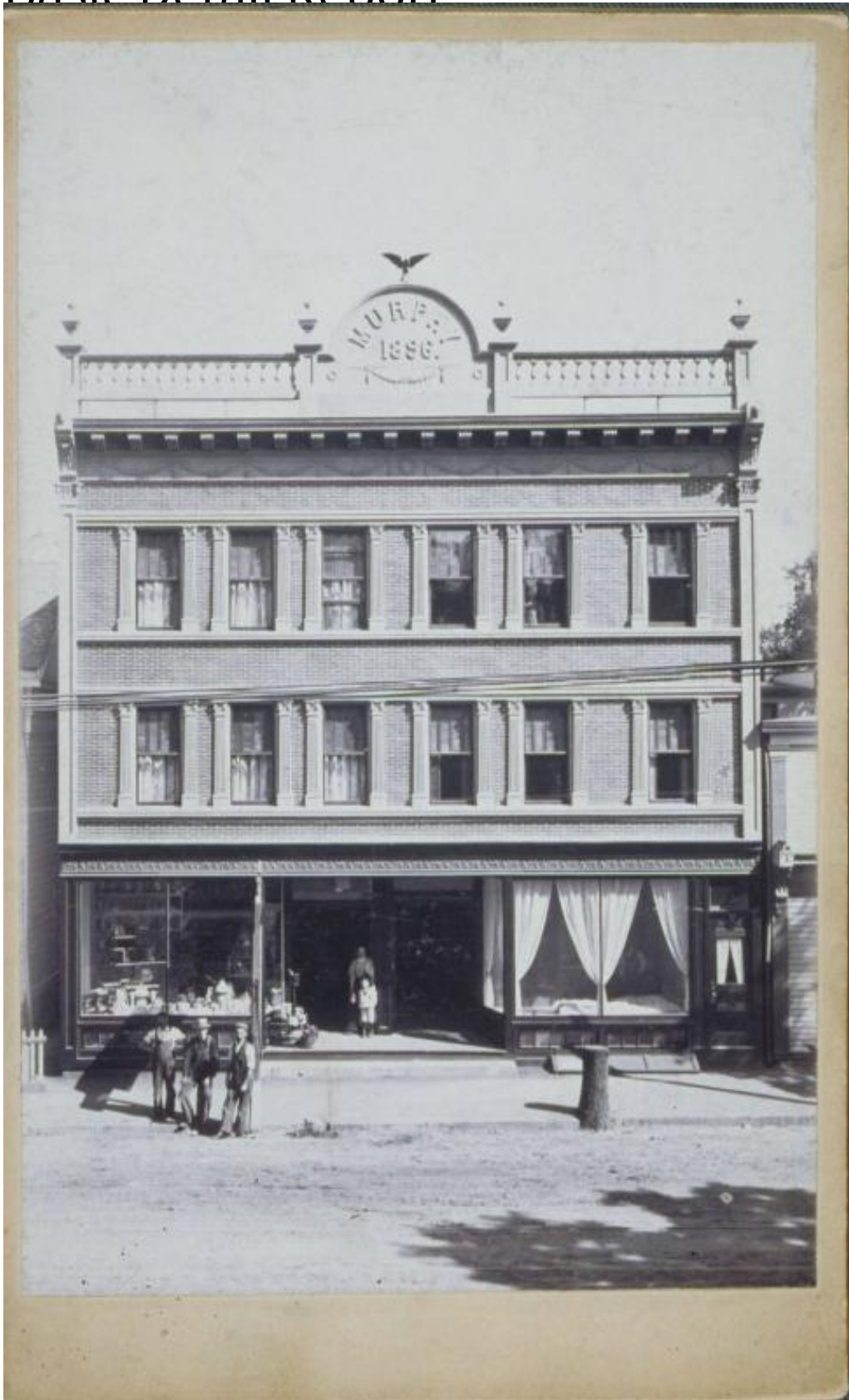


# Basic Detail Report



**Title Murphy Building, 259 Central Avenue, Norwich**

Date about 1900

# Basic Detail Report

Primary Maker Unknown

Medium Photography; gelatin silver print on paper

Description Three-story brick commercial building. Fluted pilasters frame the windows on the upper stories. A banister railing lines the roof. A flying bird, possibly an eagle, surmounts a curved central panel. A sign in the panel reads: "Murphy / 1896." Lamps and other merchandise are displayed in the shop window at the left. A woman and a boy stand in the doorway near additional merchandise, including buckets. There are white drapes in the right shop window. Three men wearing overalls stand on the sidewalk at the edge of the dirt street. A tree stump is at the edge of the street at the right.

Dimensions Primary Dimensions (overall height x width): 7 1/16 x 4 3/4in. (18 x 12cm)