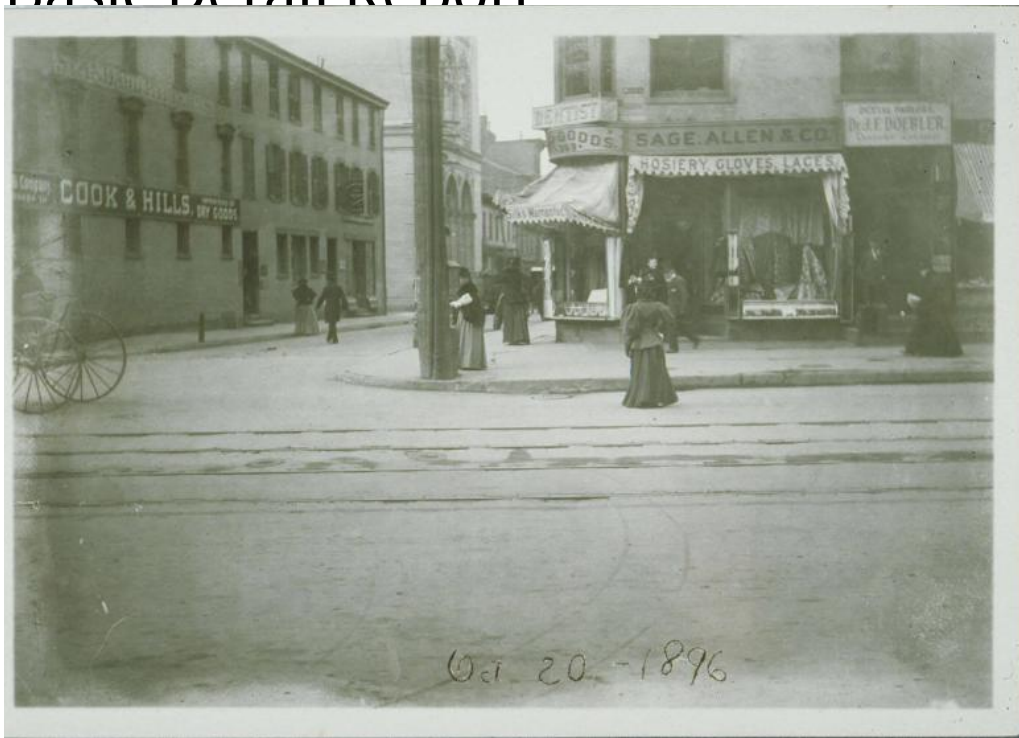


Basic Detail Report



Title Corner of Main Street and Pratt Street, Hartford, October 20, 1896

Date 1896

Primary Maker Unknown

Medium Photography; gelatin silver print on paper

Description Men and women on the sidewalk at the corner of Main and Pratt

Streets. Trolley tracks are in the road, a utility pole is at the corner, and the

wheels of a carriage are visible at the far left. Signs read: "Sage, Allen & Co."

"[Dry] Goods / 369." Signs on the awnings read: "Silks Warrant[e]d" and

"Hosiery, Gloves, Laces." Bolts of fabric are displayed in the shop windows. A

sign to the right reads: "Dental Parlors / Dr. J.F. Doeblor / Dentischer Zahnarzt."

The commercial building on the left has signs that read: "Cook & Hills /

Importers of / Dry goods" and "Standard Patterns." The stone building with

round arches on the left side of Pratt Street is the Society for Savings.

Basic Detail Report

Dimensions Primary Dimensions (overall height x width): 5 1/8 x 7 1/16in. (13 x 18cm)