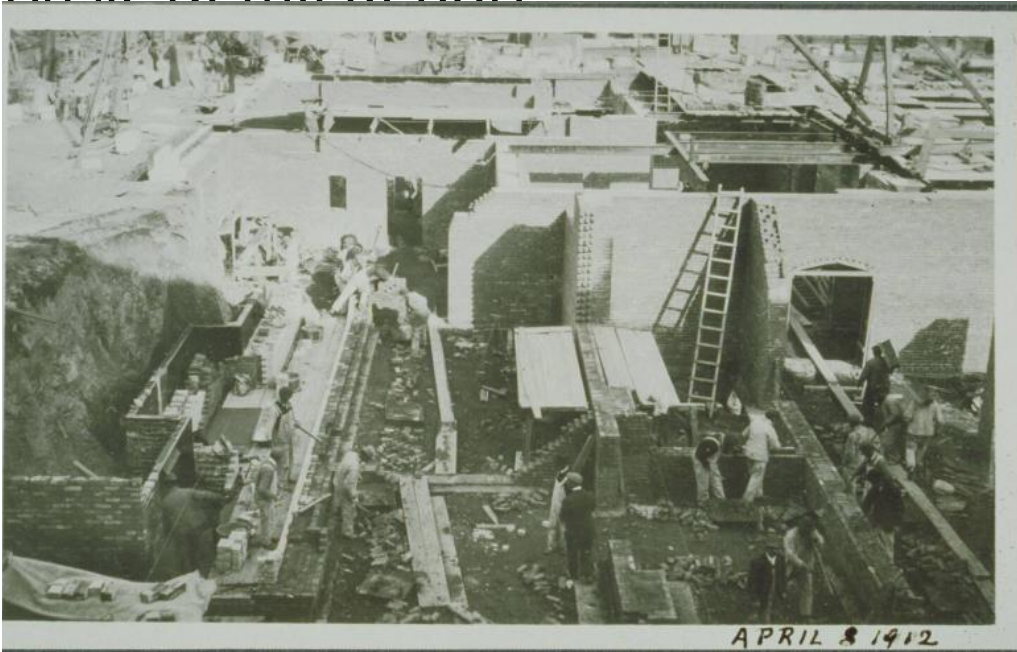


# Basic Detail Report



**Title** Construction site, eastern extension of Morgan Memorial, Main Street, Hartford

**Date** 1912

**Primary Maker** Unknown

**Medium** Photography; gelatin silver print on paper

**Description** Men at work on brick foundation. Most wear overalls and caps.

Some hold trowels or hods. A ladder leans against a wall. Steel beams and parts of cranes are visible in the background.

**Dimensions** Primary Dimensions (overall height x width): 3 9/16 x 4 3/4in. (9 x 12cm)