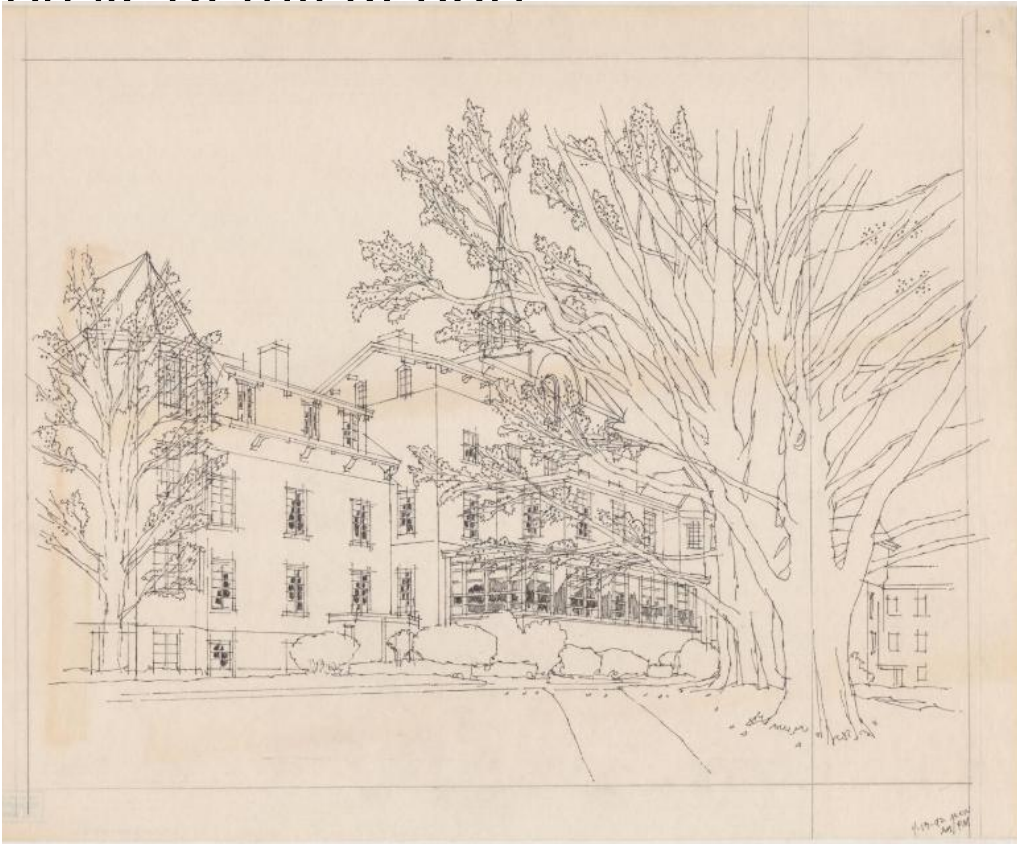


Basic Detail Report



Title Institute of Living, Hartford, Connecticut

Date 1993

Primary Maker Richard Welling

Medium Drawings; black ink on paper Photography; colored toner on paper

Photocopies; black toner on paper

Description Drawings, photocopies, and color copies of photographs of the Institute of Living in Hartford, Connecticut. The building is depicted from two different perspectives.

Dimensions Primary Dimensions (image height x width): 16 x 20 1/8in. (40.6 x 51.1 cm) and smaller Sheet (height x width): 18 x 24 1/8in. (45.7 x 61.3cm) and smaller