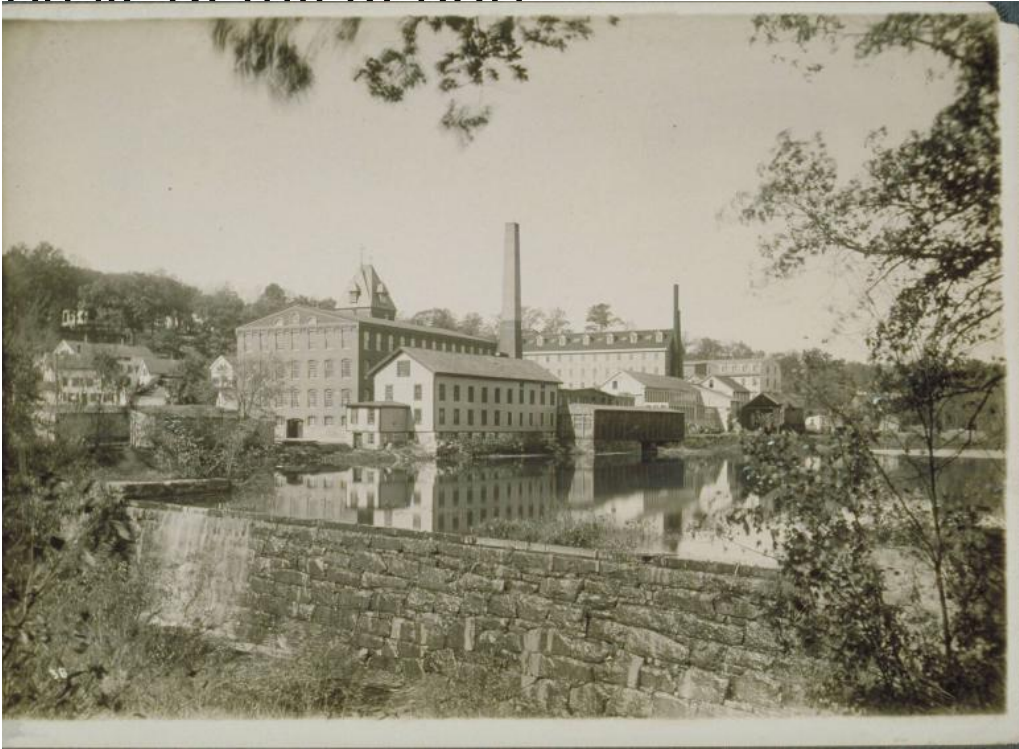


Basic Detail Report



Title Warren Woolen Company: old and new mills, Stafford Springs.

Date 1910

Primary Maker Unknown

Medium Photography; gelatin silver print on paper

Description Complex of large industrial buildings on the far bank of a large mill pond on the Willimantic River. Granite, brick and frame structures include smokestacks and a square tower. Houses and trees are on a hill in the left background. The mill dam, with water running over it, is in the foreground.

Dimensions Primary Dimensions (overall height x width): 5 1/8 x 7 1/16in. (13 x 18cm)