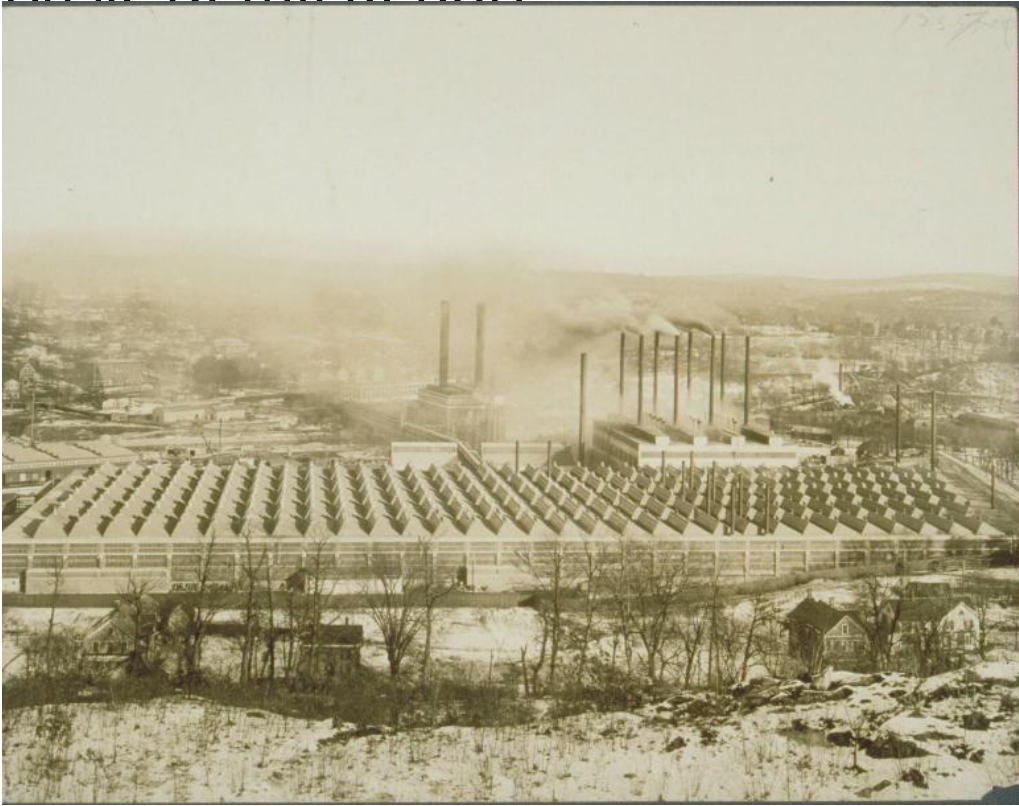


Basic Detail Report



Title Panoramic view of Scovill Manufacturing Co., Waterbury.

Date 1930-1959

Primary Maker Unknown

Medium Photography; gelatin silver print on paper

Description View from a high hill overlooking a complex of large masonry and glass industrial buildings. The building in the foreground has large banks of windows. Smoke rises from numerous smokestacks. The Mad River flows between the large modern factory building in the foreground and the smaller older factories beyond. An enclosed bridge connects both groups of buildings. Railroad cars are visible on the far left. Houses and other buildings are in the extreme foreground and background. Snow is on the ground.

Dimensions Primary Dimensions (overall height x width): 7 1/2 x 9 13/16in. (19 x 25cm)