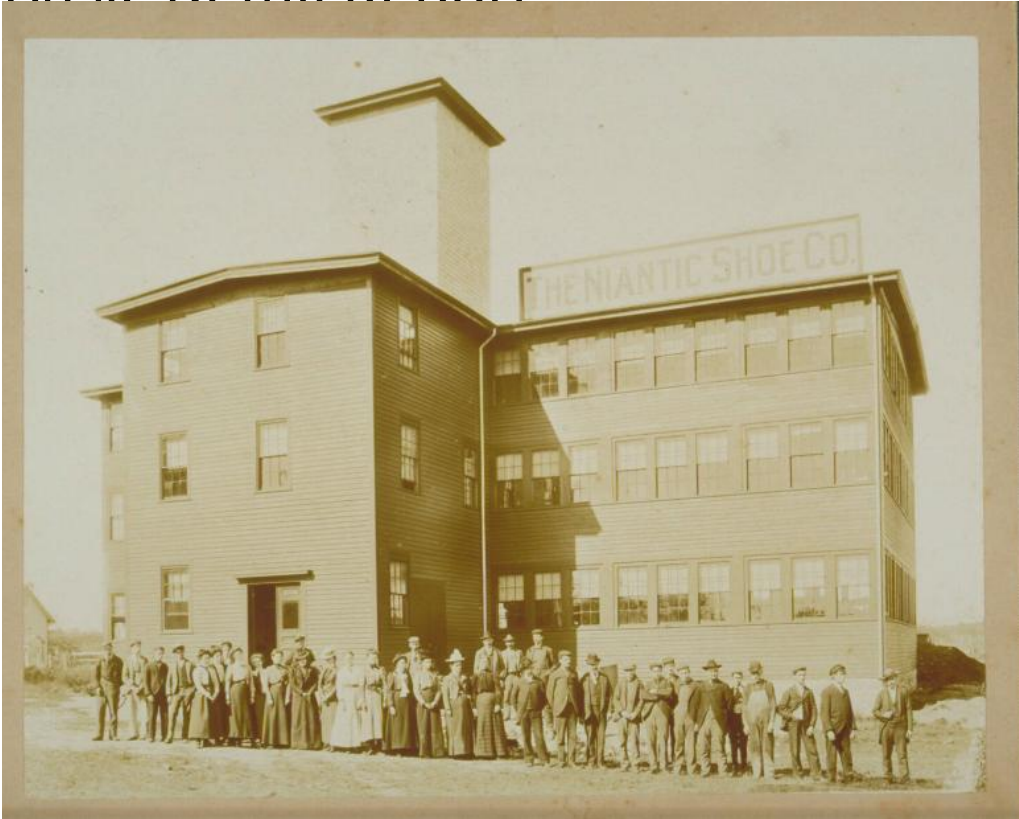


Basic Detail Report



Title Niantic Shoe Company, New London

Date about 1900

Primary Maker Unknown

Medium Photography; albumen print on paper on cardboard mount

Description Group of employees in front of three-story clapboard factory with center tower and sign on roof "The Niantic Shoe Co." Men wear jackets and hats, one man wears overalls and women wear dresses, skirts and blouses, and hats.

Dimensions Primary Dimensions (overall height x width): 7 7/8 x 9 13/16in. (20 x 25cm)