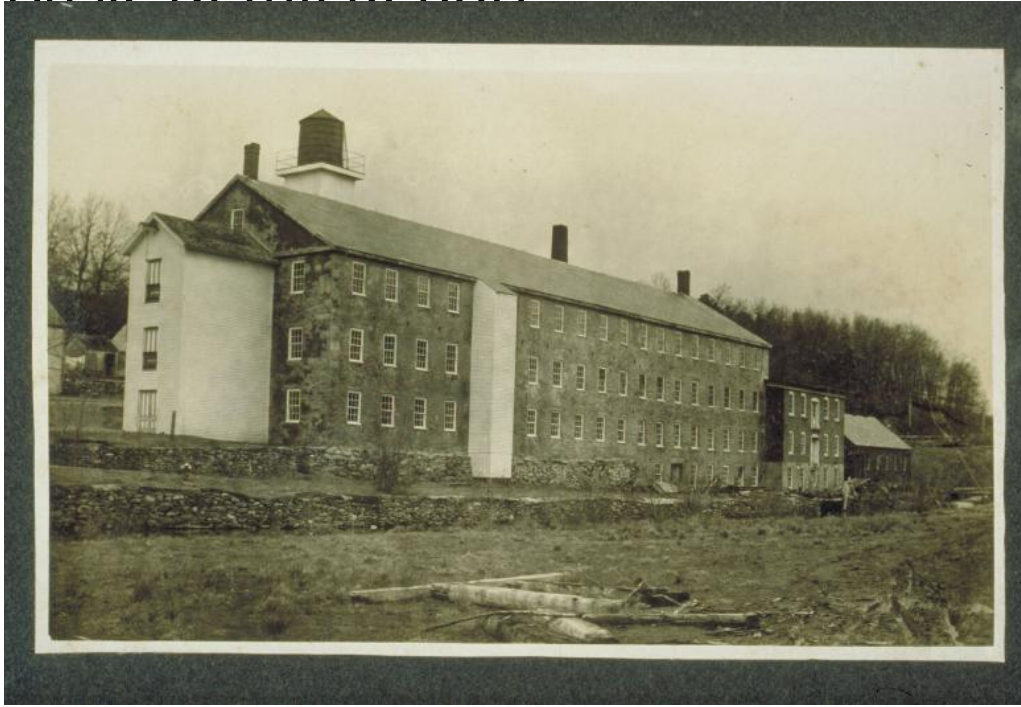


Basic Detail Report



Title C. D. and C. S. Chase, Woolen Mill, Chestnut Hill (East Killingly)

Date about 1890

Primary Maker Unknown

Medium Photography; gelatin silver print on paper on cardboard mount

Description Three story stone industrial factory building with clapboard additions and water tower on roof. Stone retaining walls in front of building. Ell on right has second and third story doors without stairs. Buildings in background on right. Inscription on back: "C. D. Chases Woolen Mill, formerly the Himes Cotton Mill, East Killingly, Connecticut"

Dimensions Primary Dimensions (overall height x width): 5 1/8 x 7 7/8in. (13 x 20cm)