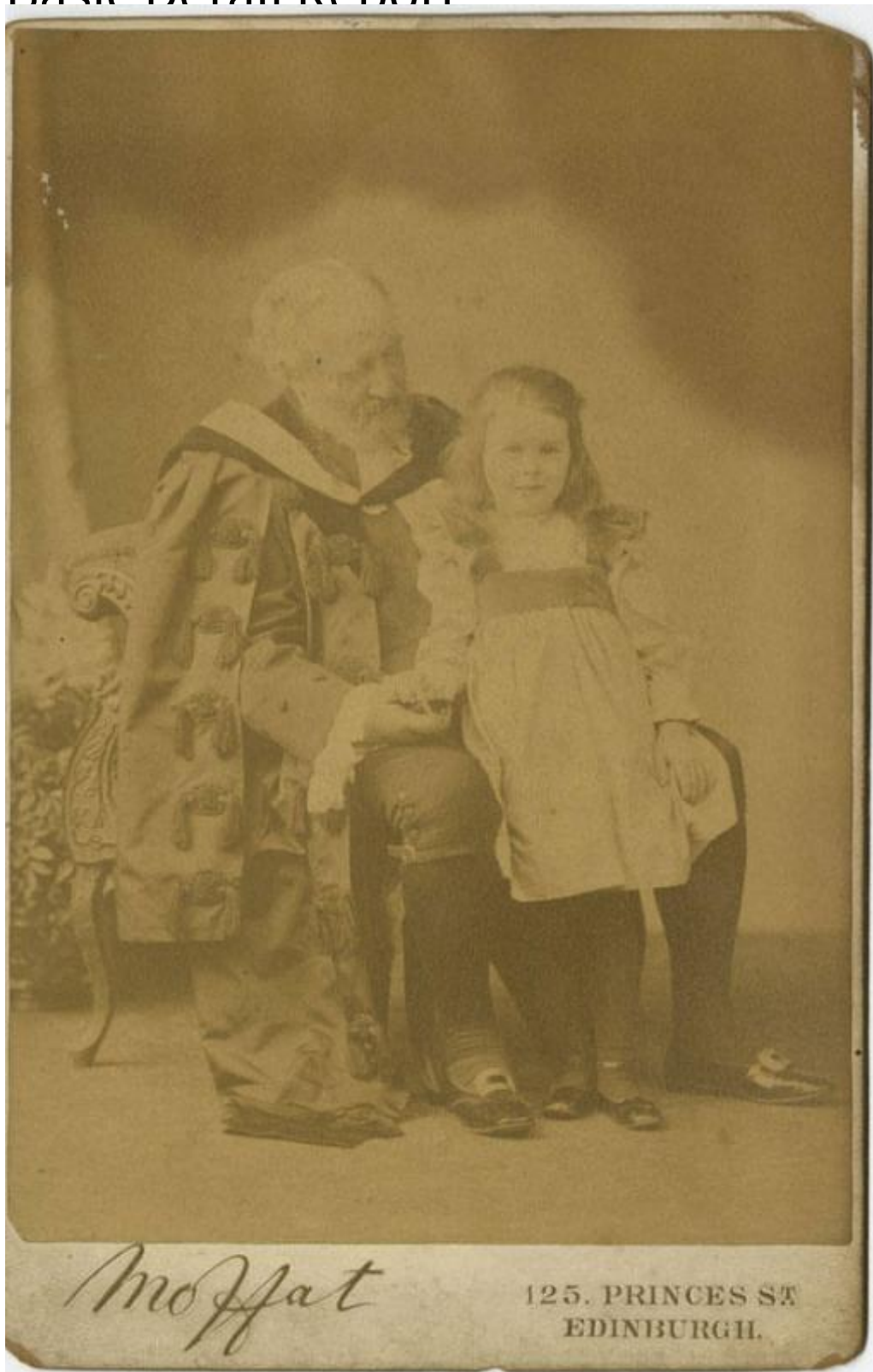


Basic Detail Report



Title Hilda Keller and Relatives

Date 1888-1920

Primary Maker John Moffat

Basic Detail Report

Medium Photography; albumen print on paper on cardboard mount; gelatin

silver prints on paper and cardboard mount

Description Formal studio portrait and amateur snapshots of Hilda Keller with various relatives from George and Mary Keller's family. Hilda's age ranges from infant through adult. The amateur snapshots include both indoor and outdoor settings.

Dimensions Primary Dimensions (image height x width): 5 3/4 x 5 1/2in. (14.6 x 14cm) or smaller Sheet (height x width): 6 1/2 x 8 1/2in. (16.5 x 21.6cm) or smaller