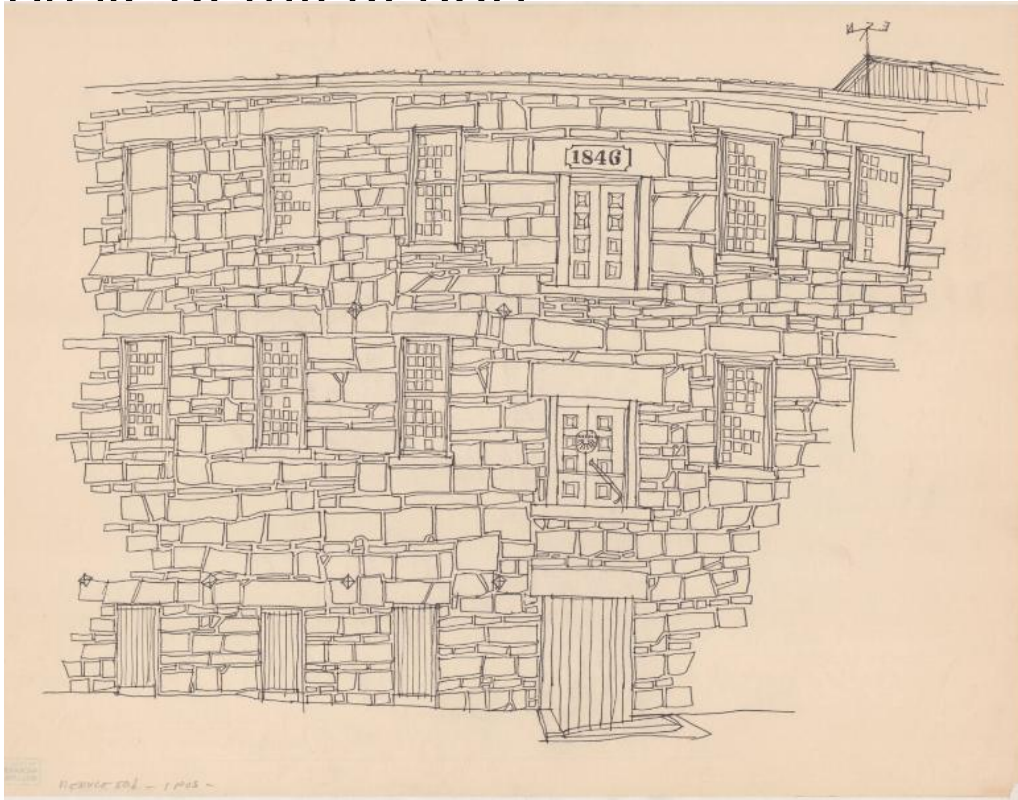


Basic Detail Report



Title Industrial Building

Date 1965-2009

Primary Maker Richard Welling

Medium Drawing; black ink on paper

Description Drawing of the facade of an unknown stone industrial building, with two rows of glass paned windows and one row of shuttered or barred windows.

There are three doors, one that is shuttered or barred, and the two double doors above it. Above the topmost door is a sign that reads, "1846." In the top right corner, a peaked roof and a weather vane are visible.

Dimensions Sheet (height x width): 18 x 23 3/4in. (45.7 x 60.3cm)