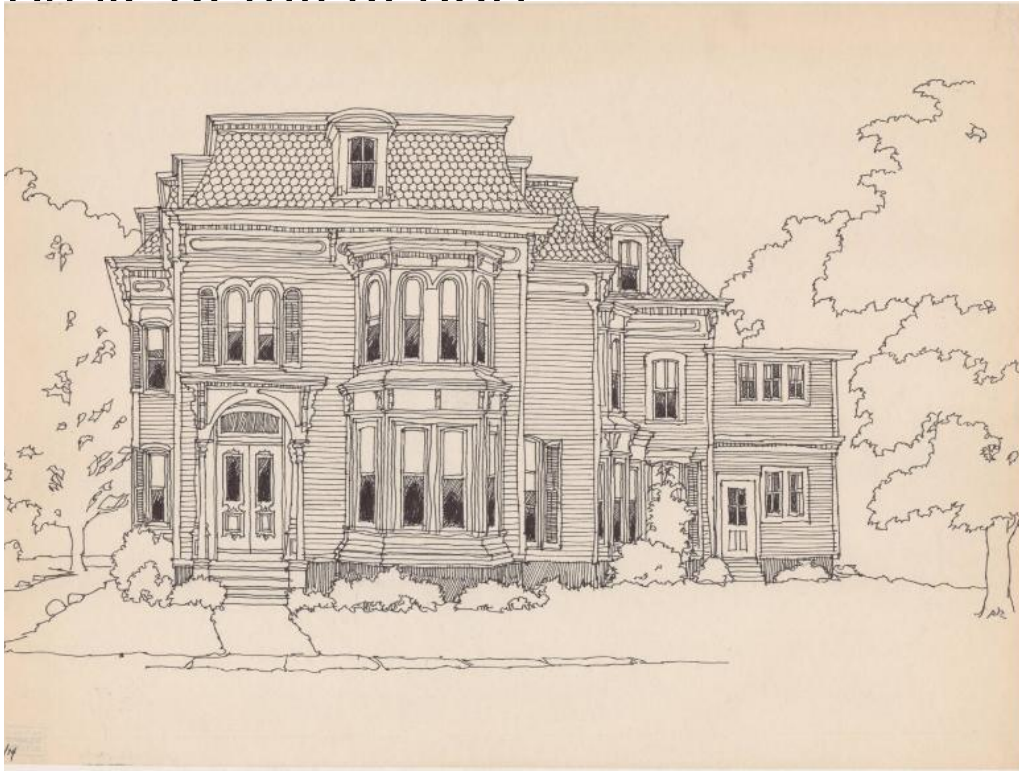


# Basic Detail Report



## Title Frances E. Hale House, Glastonbury

Date 1974

Primary Maker Richard Welling

Medium Drawing; black ink on paper

Description Drawing of the Frances E. Hale House in Glastonbury, Connecticut.

The Second Empire-style house features mansard roofs, bay windows, and a portico over the front door. There are trees on either side of the house and a sidewalk in front.

Dimensions Sheet (height x width): 16 x 22in. (40.6 x 55.9cm)