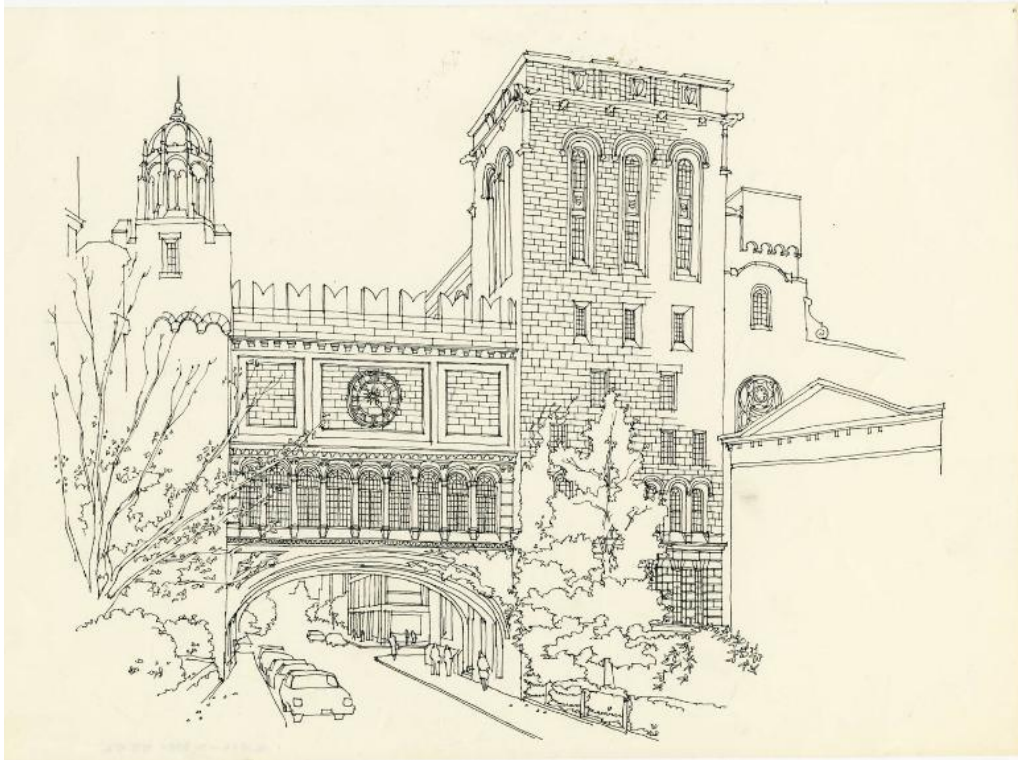


Basic Detail Report



Title High Street Skywalk, New Haven, Connecticut

Date 1965-2009

Primary Maker Richard Welling

Medium Serigraphy; black printer's ink on paper

Description Reproduction of a drawing of the pedestrian bridge on High Street between Street Hall on the left and the Yale Art Gallery on the right, on Yale University's campus in New Haven, Connecticut. The bridge, with a clock facing the street, and the gallery, are drawn in detail, while the buildings behind the gallery and Street Hall are simple outlines. Pedestrians are shown on the sidewalks, along which automobiles are parked. Trees are on both sides of the street.

Dimensions Sheet (height x width): 8 5/8 x 12in. (21.9 x 30.5cm)