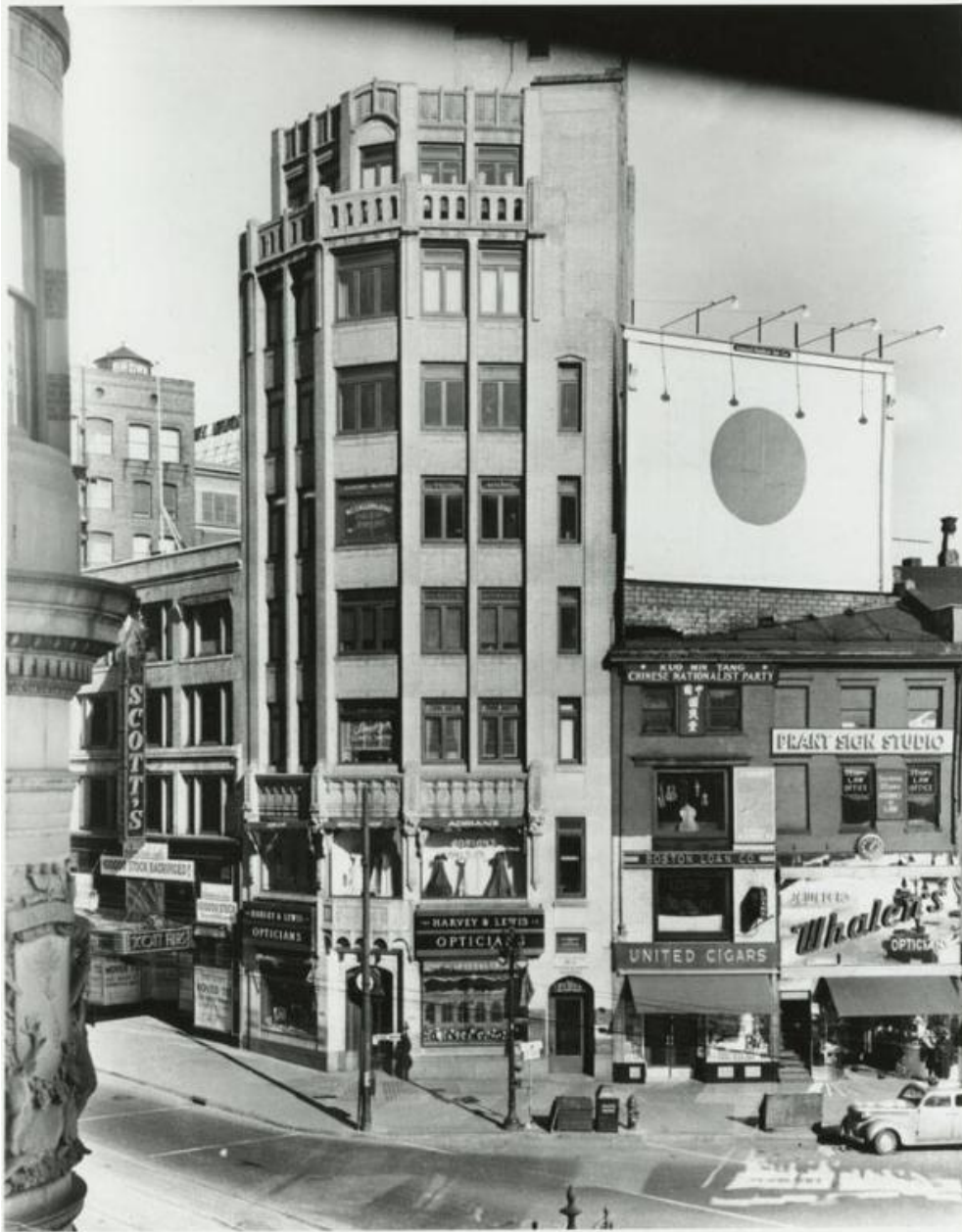


# Basic Detail Report



**Title** State Street, Hartford, Connecticut

**Date** 1930-1950

**Primary Maker** Meyers Studios, Inc.

**Medium** Photography; gelatin silver prints on paper

**Description** Views of the north side of upper State Street, Hartford, Connecticut, at and near the corner of Main Street. Commercial buildings line the street.

# Basic Detail Report

Businesses include Harvey & Lewis Opticians, Scott Furs, United Cigars, the

Boston Loan Company, the Prant Sign Studio, Whalen's Jewelers and Opticians,

the offices of the Chinese Nationalist Party, the offices of the Hartford Courant,

the Princess Theater, the Hotel Oxford, the Far East Garden restaurant, M. Linn &

Sons clothing, and Clapp & Treat hardware store. Automobiles are parked on the

street. A truck has lettering that reads "Hartford Apron & Towel Supply Co.

Trolley tracks are in the road. A trash can and a fire hydrant are on the street

corner. A billboard, an electric sign, and a water tank are visible on the rooftops.

Dimensions Primary Dimensions (image height x width): 9 1/2 x 7 1/2in. (24.1 x

19.1cm) or smaller Sheet (height x width): 10 x 8in. (25.4 x 20.3cm) or smaller