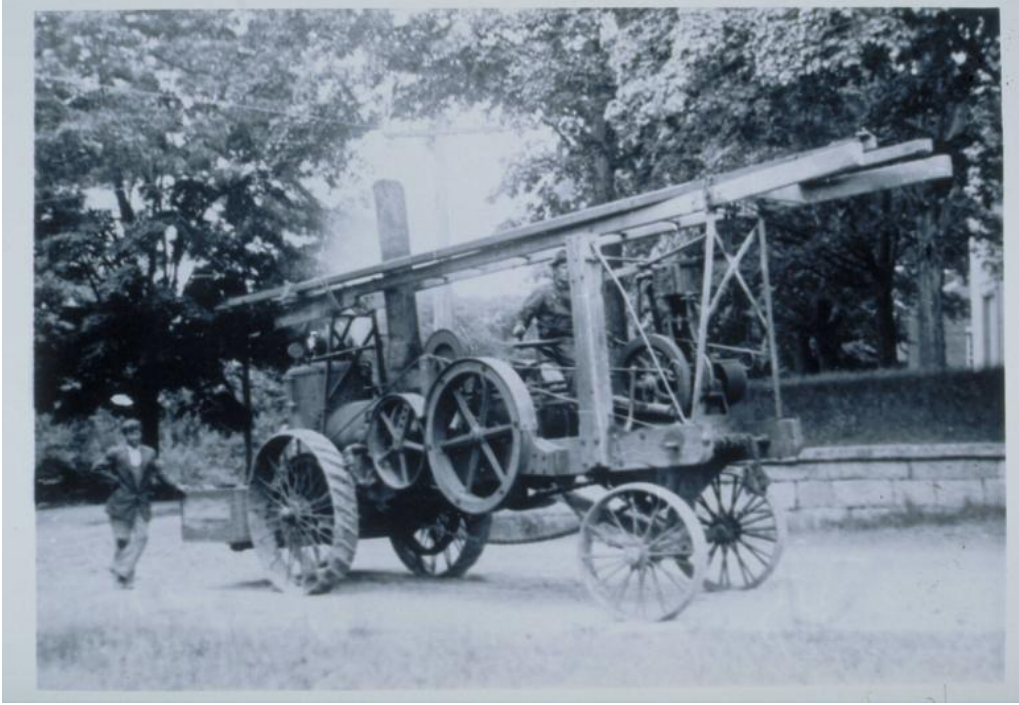


Basic Detail Report



Title Steam-powered tractor

Date about 1910

Primary Maker Unknown

Medium Photography; gelatin silver print on paper

Description Man seated at the controls of a massive steam-driven vehicle. The boiler and smokestack are in the rear. A second man leans on the back fender. Probably in Hartford.

Dimensions Primary Dimensions (overall height x width): 4 3/4 x 6 11/16in. (12 x 17cm)