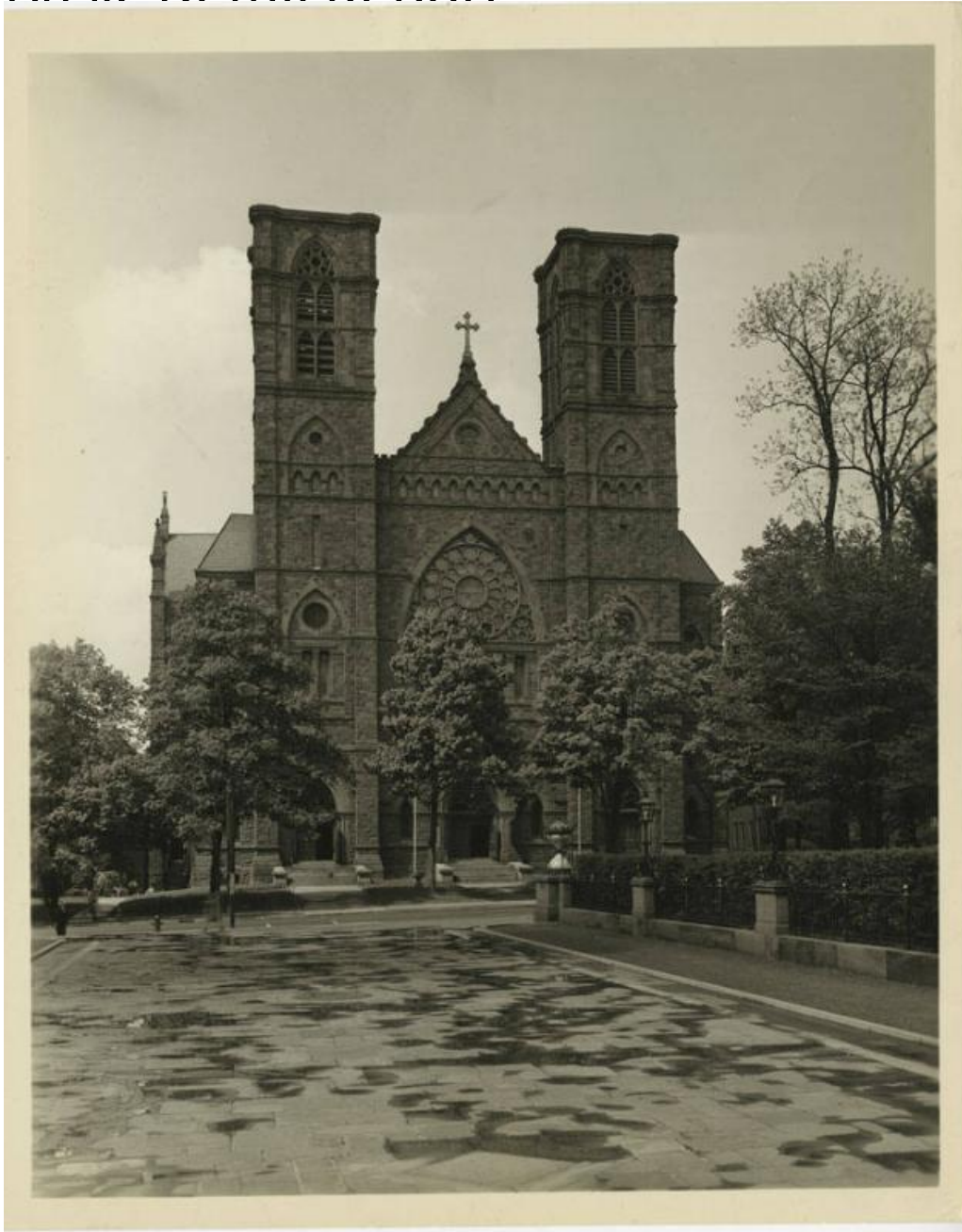


Basic Detail Report



Title Saint Joseph Cathedral, Farmington Avenue, Hartford

Date before 1965

Primary Maker Meyers Studios, Inc.

Medium Photography; gelatin silver prints on paper

Description Two photographs show the old Saint Joseph Cathedral before its destruction by fire in 1956 and immediately following the fire, with a pile of still

Basic Detail Report

smoking rubble in front of the entrance. One photograph shows the new cathedral which was dedicated in 1962. The old church was built of brownstone in the gothic style, with two square towers, and windows with pointed arches. The new cathedral, built of reinforced concrete is in the art deco style, with a frieze above the entrance. All three photographs were take from approximately same viewpoint.

Dimensions Primary Dimensions (image height x width): 9 3/16 x 7 1/2in. (23.3 x 19.1cm) or smaller Sheet (height x width): 10 x 8in. (25.4 x 20.3cm) or smaller