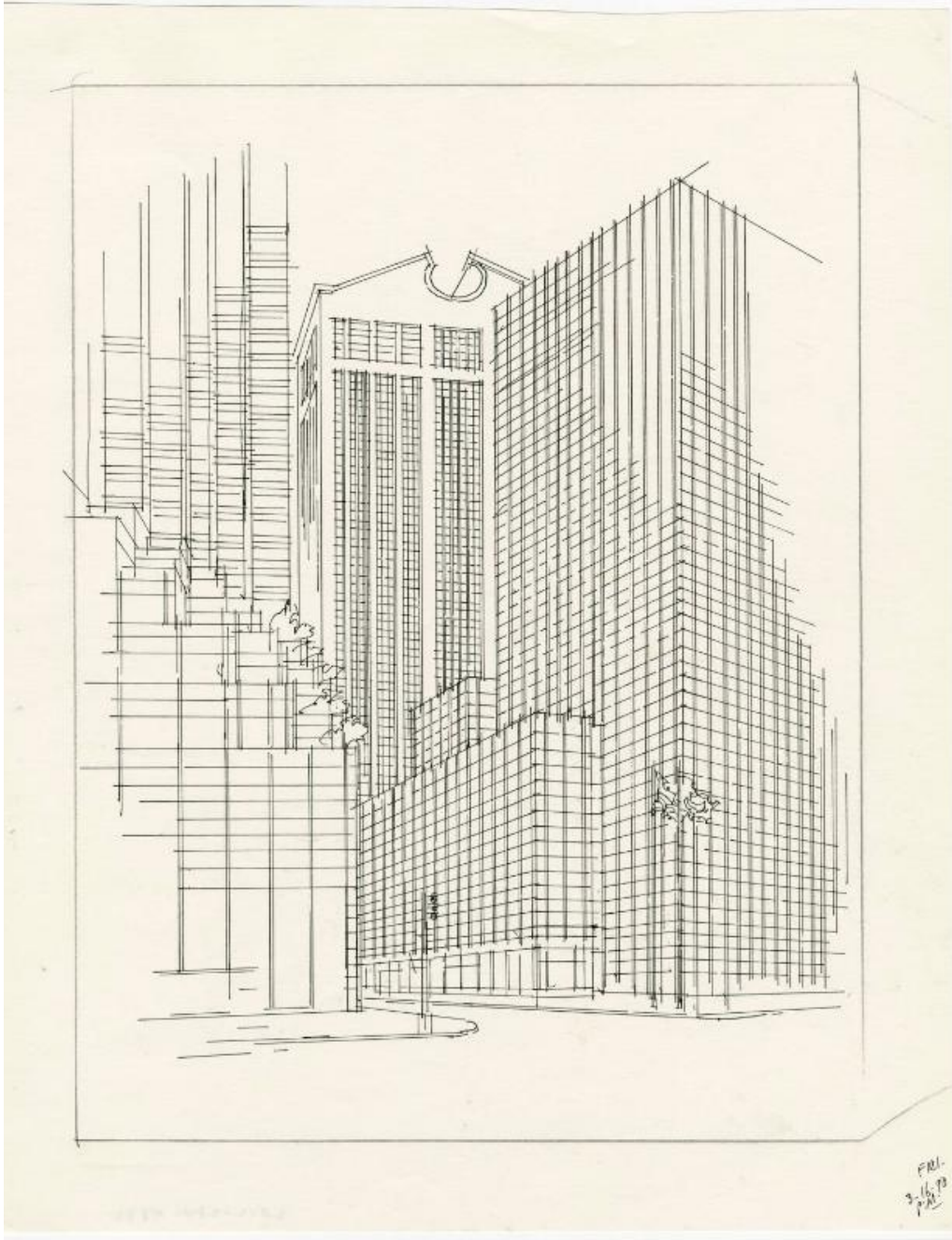


Basic Detail Report



**Title Trump Tower, 550 Madison Avenue and 717 Fifth Avenue,
Manhattan**

Date 1990

Primary Maker Richard Welling

Medium Drawing; black ink on paper

Basic Detail Report

Description Drawing of the buildings at the intersection of Fifth and Madison

Avenues in Manhattan. At the left is the corner of Trump Tower on Fifth Avenue,

and across Madison Avenue is 717 Fifth Avenue. Behind it is 550 Madison Avenue

(originally the AT&T Building, subsequently called the Sony Tower).

Dimensions Primary Dimensions (image height x width): 12 x 9in. (30.5 x 22.9cm)

Sheet (height x width): 13 7/8 x 11in. (35.2 x 27.9cm)