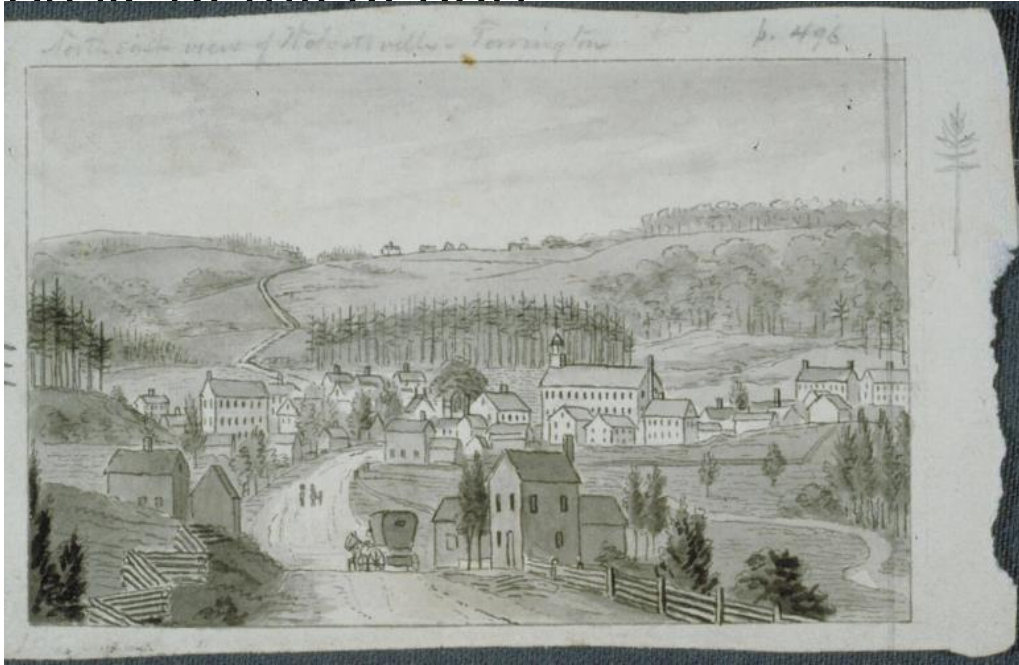


Basic Detail Report



Title Southeast view of Wolcottville, Torrington.

Date probably 1836

Primary Maker John Warner Barber

Medium Drawing; ink on paper

Description View of the central part of Wolcottville (Torrington) from the Hartford Turnpike. The Litchfield Turnpike appears passing over the hills in the left background. The three-story building below it was used as a house of worship by various denominations. The other large building with a spire is a woolen factory.

Dimensions Primary Dimensions (overall height x width): 3 1/8 x 4 3/4 in. (8 x 12 cm)