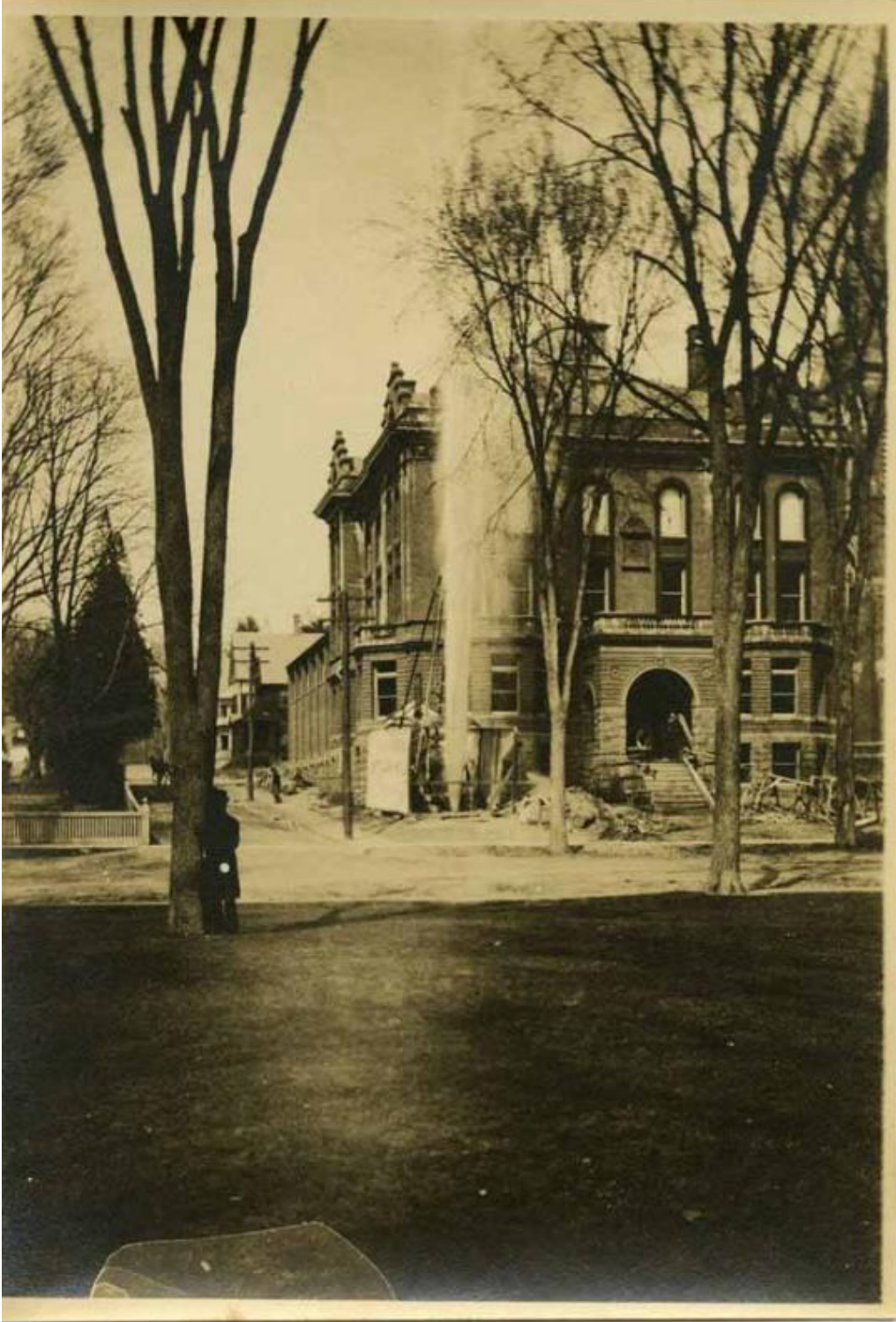


Basic Detail Report



Title Well digging, possibly in New Haven

Date Possibly 1890

Primary Maker Unknown

Medium Photography; gelatin silver print on paper

Basic Detail Report

Description Water is shooting up outside a large brick and stone public building.

Construction materials surround the front of the building A large sign reads in part "ARTESIAN WELL." Leafless trees, apparently elm trees are in the foreground. A man stands beside one of the trees looking at the eruption. There appears to be a city square in the left background.

Dimensions Primary Dimensions (image height x width): 6 1/2 x 4 1/2in. (16.5 x 11.4cm) Sheet (height x width): 6 3/4 x 4 3/4in. (17.1 x 12.1cm)