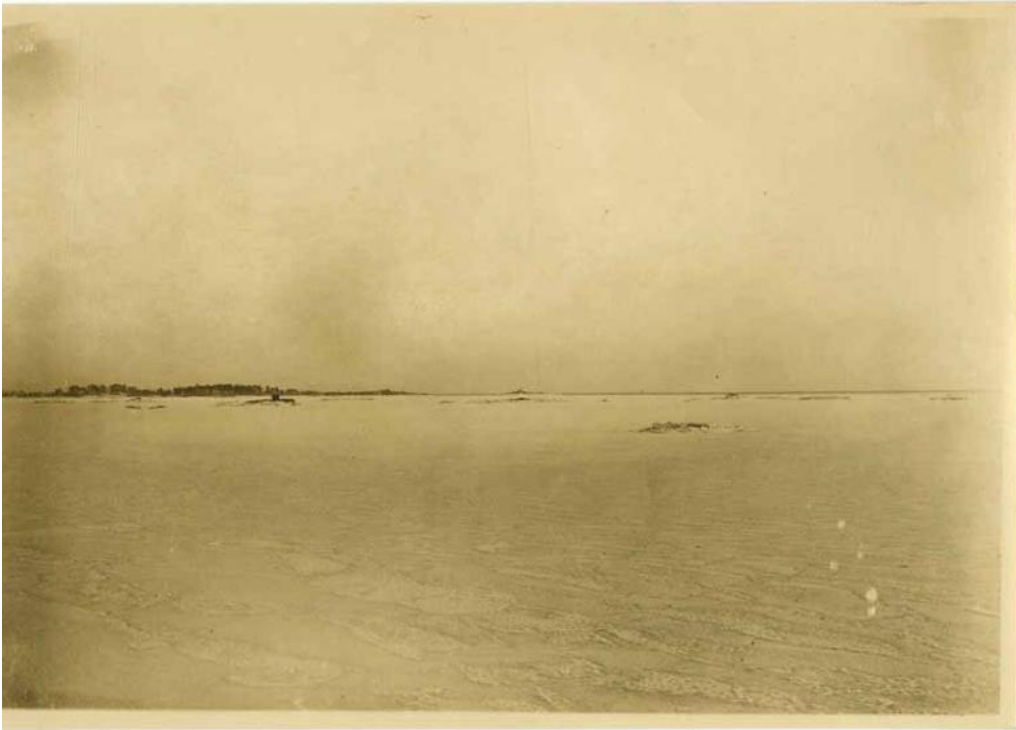


Basic Detail Report



**Title View of Long Island Sound, probably from Pine Orchard Beach,
Branford**

Date early 20th century

Primary Maker Unknown

Medium Photography; gelatin silver print on paper

Description Small sandy island and a distant shore are visible beyond a broad
expanse of water.

Dimensions Primary Dimensions (image height x width): 4 3/8 x 6 3/8in. (11.1 x
16.2cm) Sheet (height x width): 4 3/4 x 6 3/4in. (12.1 x 17.1cm)