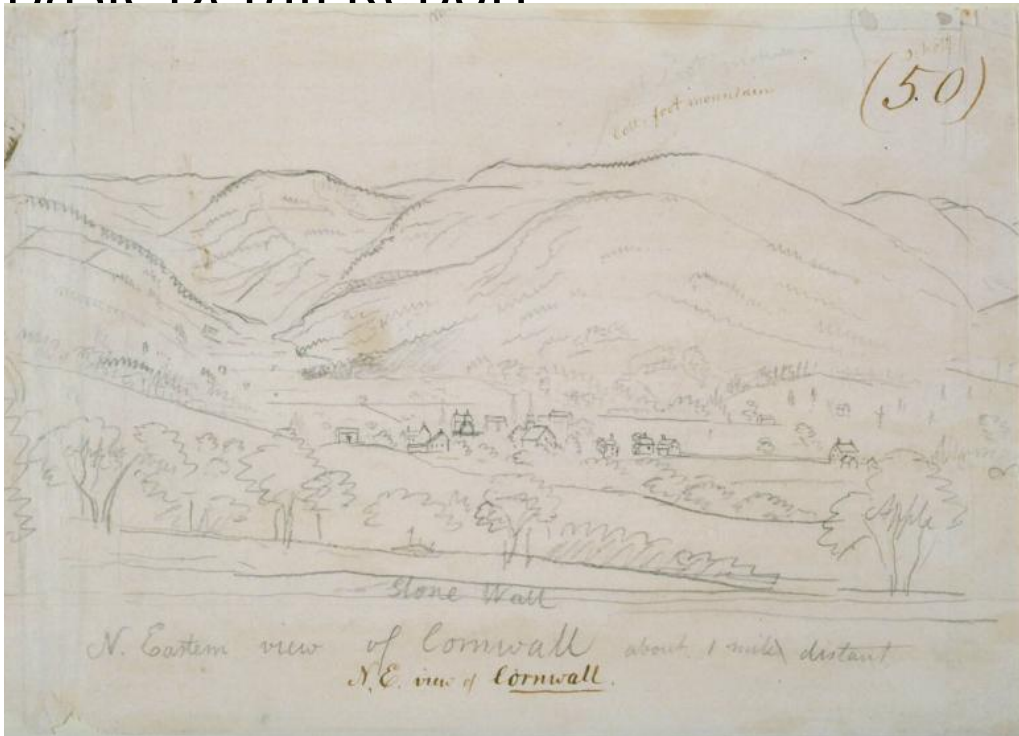


Basic Detail Report



Title North Eastern view of Cornwall.

Date 1835

Primary Maker John Warner Barber

Medium Drawing; pencil on paper

Description The village of South Cornwall, a little cluster of houses in a deep valley. The spire of the Congregational Church is visible. Coltsfoot Mountain is in the background, identified by an inscription. Inscriptions identify the trees in the foreground as "Apple" trees and a wall as a "stone wall." According to Barber's text, the view is taken from the house of George Wheaton, on the road between Goshen and Sharon

Dimensions Sheet (height x width): 7 1/16 x 9 13/16in. (18 x 25cm)