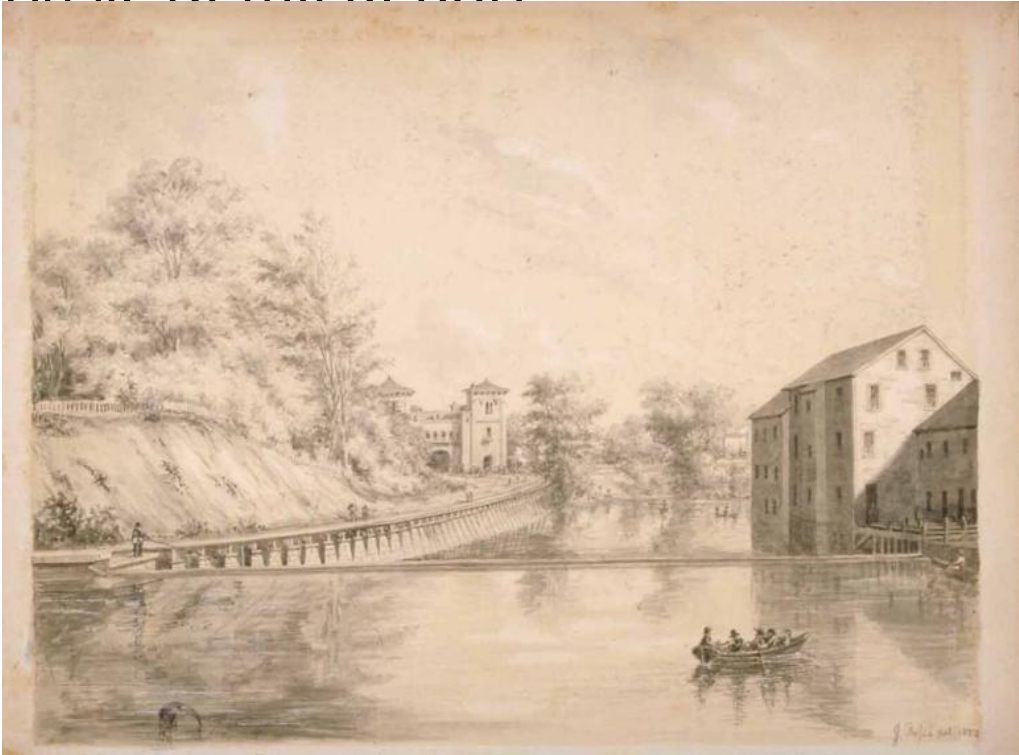


Basic Detail Report



Title Scene at Hartford, Conn. 1852.

Date 1852

Primary Maker Joseph Ropes

Medium Drawing; pencil and ink wash on paper

Description View of the Park River, looking east towards the Railroad Station. A mill building is at the right, men in rowboats are on the river both above and below the mill dam. A man fishes from the railway embankment and men and women stroll along the tracks. This drawing served as the basis for a wood engraving.

Dimensions Primary Dimensions (overall height x width): 9 1/16 x 11 7/16in. (23 x 29cm)