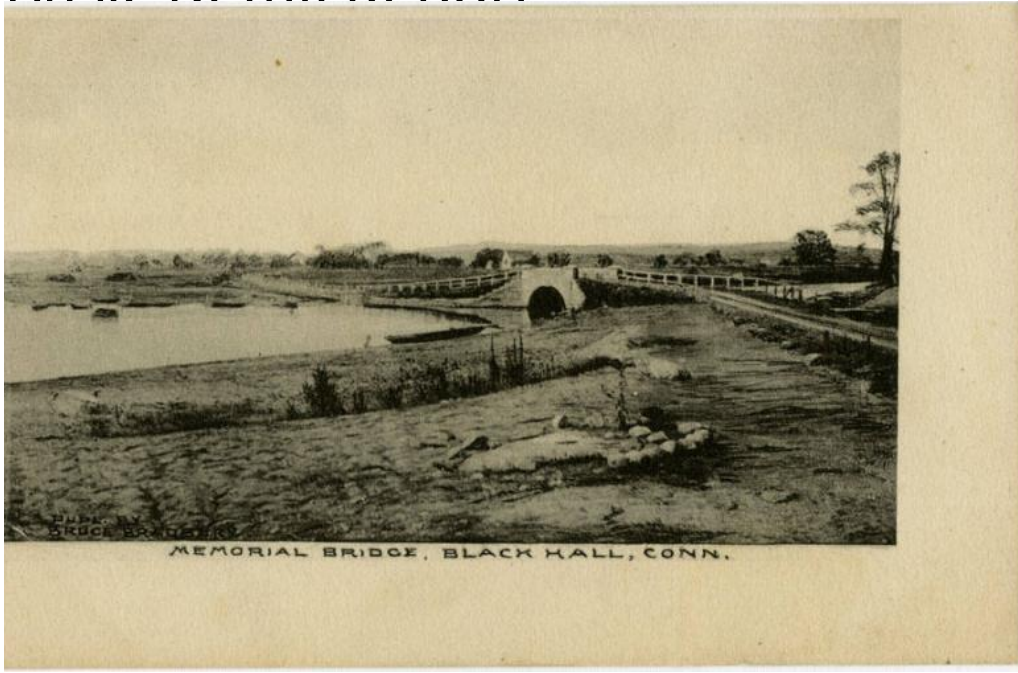


# Basic Detail Report



## Title Memorial Bridge, Black Hall, Conn.

Date 1900-1910

Primary Maker Unknown

Medium Photomechanical prints; printer's ink on postcards

Description A stone arched bridge spans a broad creek, apparently a tidal creek.

The road on either side of the bridge is lined with rail fences. The land in the foreground is rocky and slopes down to the water. There are marshes, low hills, and a few trees in the background.

Dimensions Primary Dimensions (image height x width): 2 3/4 x 4 3/4in. (7 x 12.1 cm) Sheet (height x width): 3 1/2 x 5 1/2in. (8.9 x 14cm)