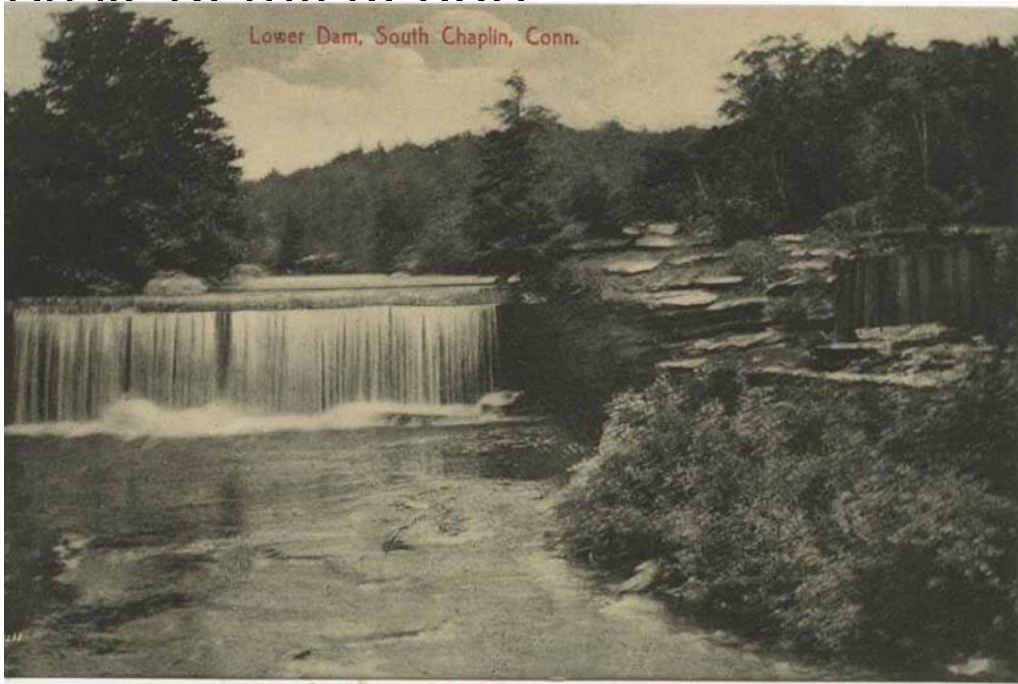


Basic Detail Report



Title Chaplin, Connecticut

Date 1900-1910

Primary Maker W. J. Phillips

Medium Photomechanical prints; printer's ink on postcards

Description Views of Chaplin, Connecticut include Chaplin center, the Congregational Church, and a bridge and the lower dam in South Chaplin. In the view of the center, the dirt road is lined with utility poles, frame buildings, and large leafy trees, possibly maple trees.

Dimensions Primary Dimensions (image height x width): 3 1/2 x 5 1/2in. (8.9 x 14cm) Sheet (height x width): 3 1/2 x 5 1/2in. (8.9 x 14cm)