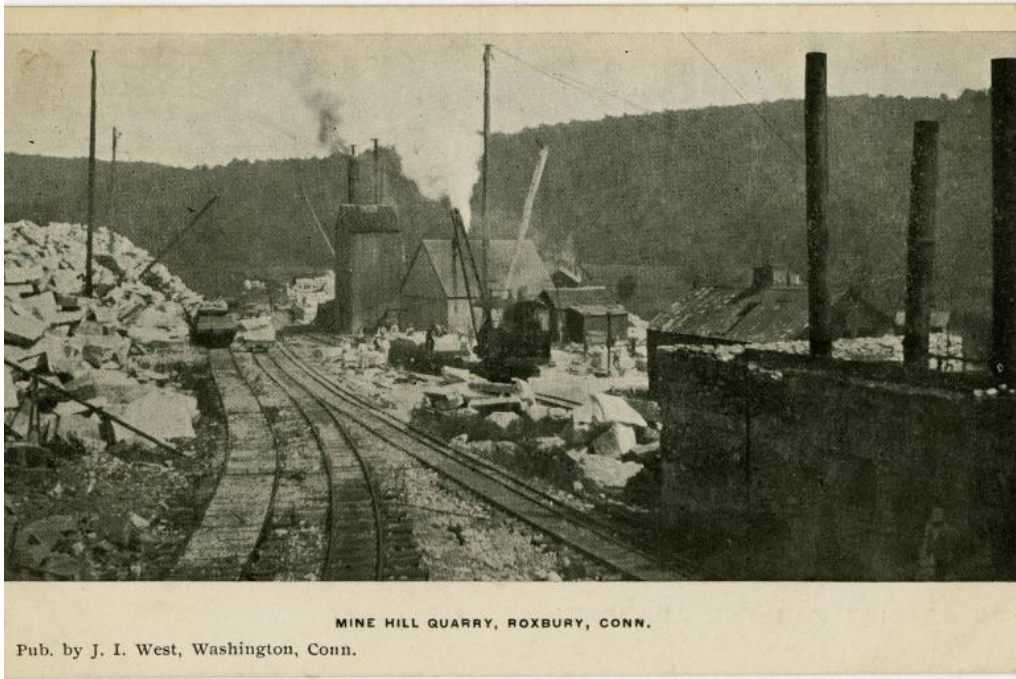


# Basic Detail Report



## Title Roxbury, Connecticut

Date 1900-1940

Primary Maker H. Ford Aiken

Medium Photomechanical prints; printer's ink on postcards

Description Views of Roxbury, Connecticut, include the Mine Hill Quarry, the Old Mill, Overlook Farm, the Seth Warner Monument, the breaking up of the ice on the Shepaug River, Judd's Bridge, the Depot, the Booth Free School, the Congregational Church, the Episcopal Church, Memorabilia Oak, a snow-covered train at Roxbury Station, Prindle Hill, Main Street, the Post Office and residence of G.W. Hurlburt, the Post Office and General Store, the Bantam River, Hodge's Store, the State Road south of the Railroad Station, and unidentified street scenes and houses. Some photographs include automobiles, some include horse-drawn vehicles. The photograph of Hodge's Store includes gasoline pumps.

# Basic Detail Report

Dimensions Primary Dimensions (image height x width): 3 1/2 x 5 1/2in. (8.9 x 14cm) or smaller Sheet (height x width): 3 1/2 x 5 1/2in. (8.9 x 14cm) or smaler