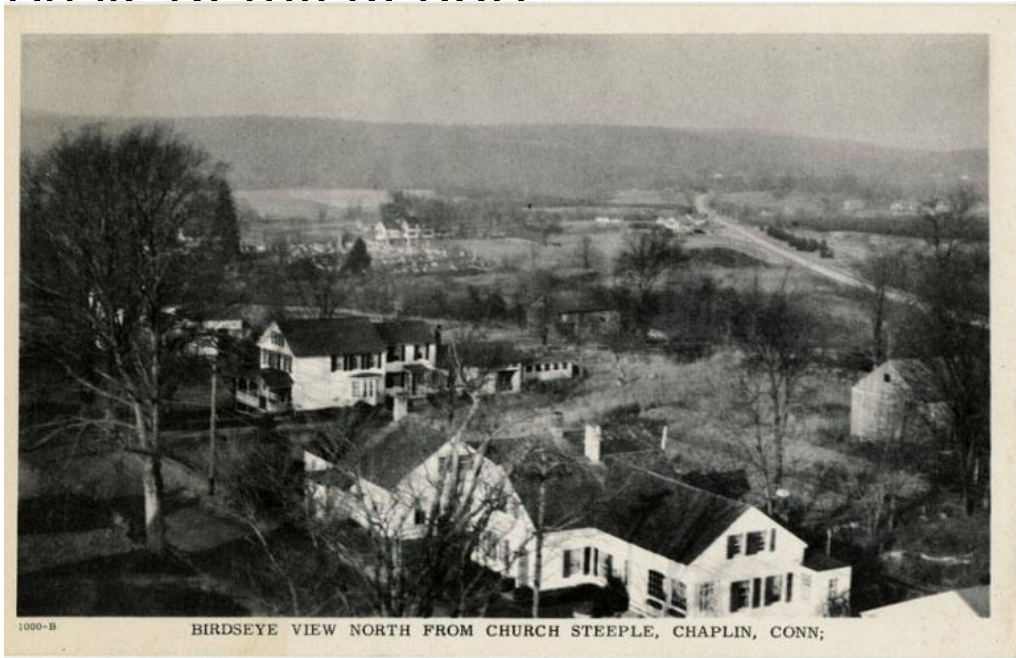


Basic Detail Report



Title Chaplin, Connecticut

Date 1900-1920

Primary Maker Portland Lithograph Company

Medium Photomechanical prints; printer's ink on postcards Photography;

albumen prints on postcards, gelatin silver prints on postcards

Description Views of Chaplin, Connecticut include the Congregational Church, the Lower Dam in South Chaplin, a bridge in South Chaplin, Chaplin Center, the Post Office and Main Street, a house, an inn or store, an industrial building, and a bird-eye view taken from the church steeple. One photograph shows Frank G. Lummis and Miss Delia A. Lummis standing in front of their mother's home, a one-story center chimney frame house. Some photographs include utility poles and automobiles.

Dimensions Primary Dimensions (image height x width): 3 1/2 x 5 1/2in. (8.9 x 14cm) or smaller Sheet (height x width): 3 1/2 x 5 1/2in. (8.9 x 14cm) or smaller