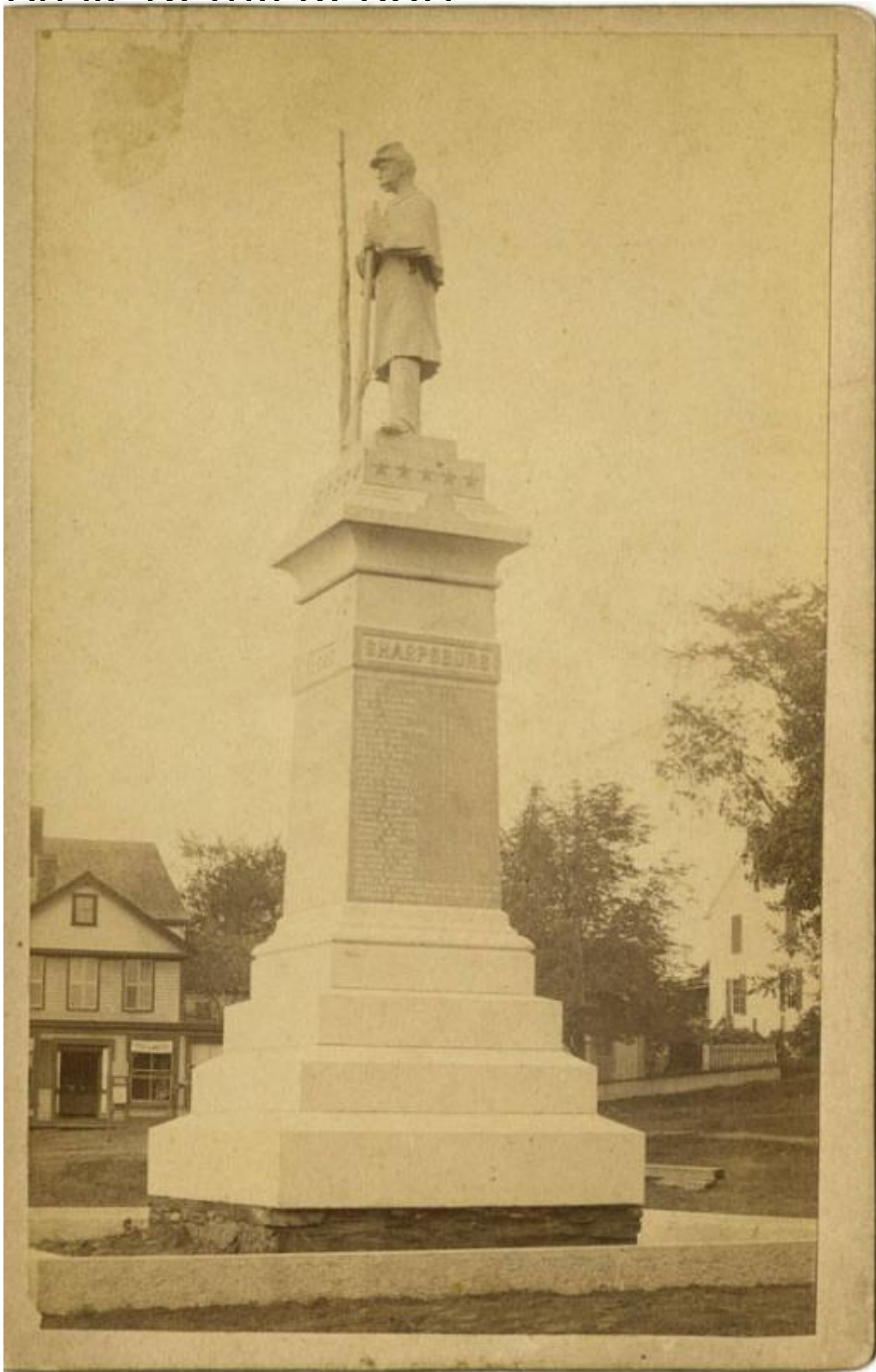


# Basic Detail Report



**Title Civil War Monuments**

Date after 1888

Primary Maker Walter E. Clark

# Basic Detail Report

Medium Photography; albumen print on paper on cardboard mount

Description Views of three Civil War monuments, the monument to General

Nathaniel Lyon in Eastford, Connecticut, and monuments in Brooklyn and

Suffield, Connecticut. The monuments in Brooklyn and Suffield feature soldiers

standing leaning on their rifles atop high bases. The monument in Eastford is

surmounted by an eagle and features a bas-relief of General Lyon on horseback.

The Lyon monument is surrounded by a low chain fence and gravestones. Frame

buildings are in the backgrounds of the other two views. A leafless tree,

evidently an elm, appears in the picture of the monument in Brooklyn.

Dimensions Primary Dimensions (image height x width): 6 1/8 x 3 3/4in. (15.6 x

9.5cm) or smaller Sheet (height x width): 6 1/8 x 3 3/4in. (15.6 x 9.5cm) or smaller

Mount (height x width): 6 5/8 x 4 1/4in. (16.8 x 10.8cm) or smaller