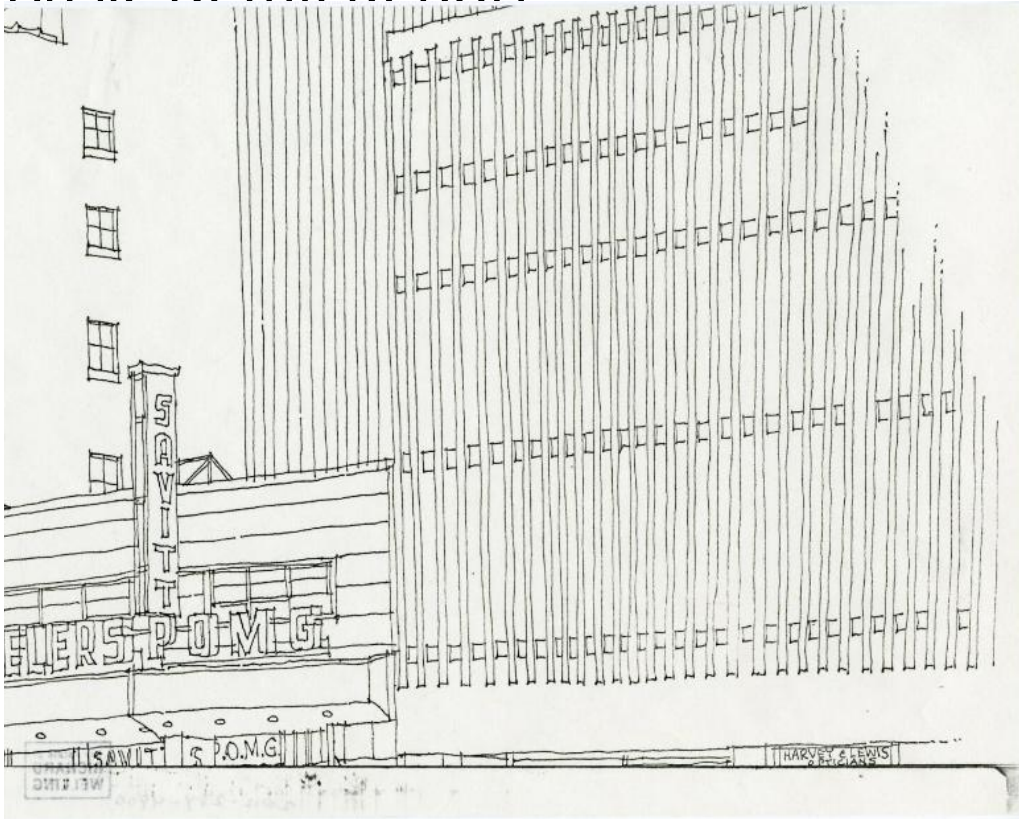


# Basic Detail Report



## Title Savitt Jewelers POMG, Hartford, Connecticut

Date 1986

Primary Maker Richard Welling

Medium Photocopy; black ink on paper

Description Part of a photocopy reproduction of a drawing of buildings on

Asylum Street in downtown Hartford, Connecticut. Savitt Jewelers is depicted.

On the building next to it, the sign for Harvey & Lewis Opticians is just visible at the bottom.

Dimensions Primary Dimensions (image height x width): 8 1/2 x 11in. (21.6 x 27.9 cm) Sheet (height x width): 8 1/2 x 11in. (21.6 x 27.9cm)