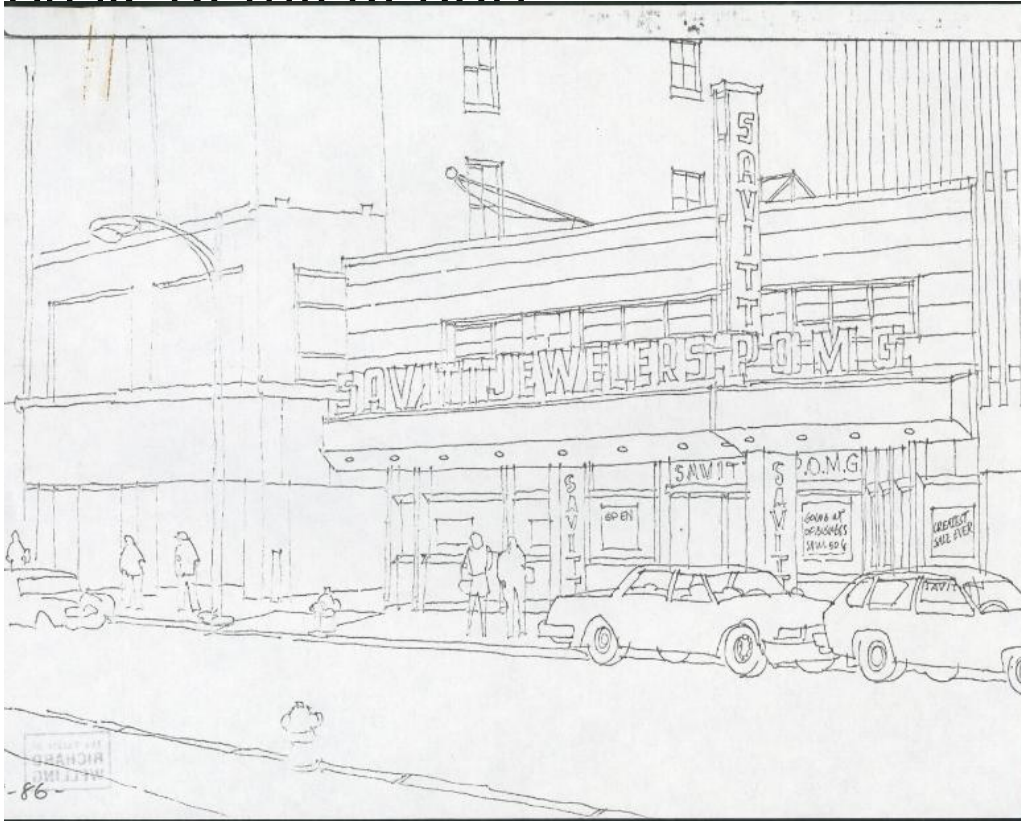


Basic Detail Report



Title Savitt Jewelers POMG, Hartford, Connecticut

Date 1986

Primary Maker Richard Welling

Medium Photocopy; black ink on paper

Description Part of a photocopy reproduction of a drawing of Savitt Jewelers on Asylum Street in downtown Hartford, Connecticut. Signs in the windows announce a going out of a business sale. There are two automobiles parked on the street and pedestrians on the sidewalk.

Dimensions Primary Dimensions (image height x width): 8 1/2 x 11in. (21.6 x 27.9 cm) Sheet (height x width): 8 1/2 x 11in. (21.6 x 27.9cm)