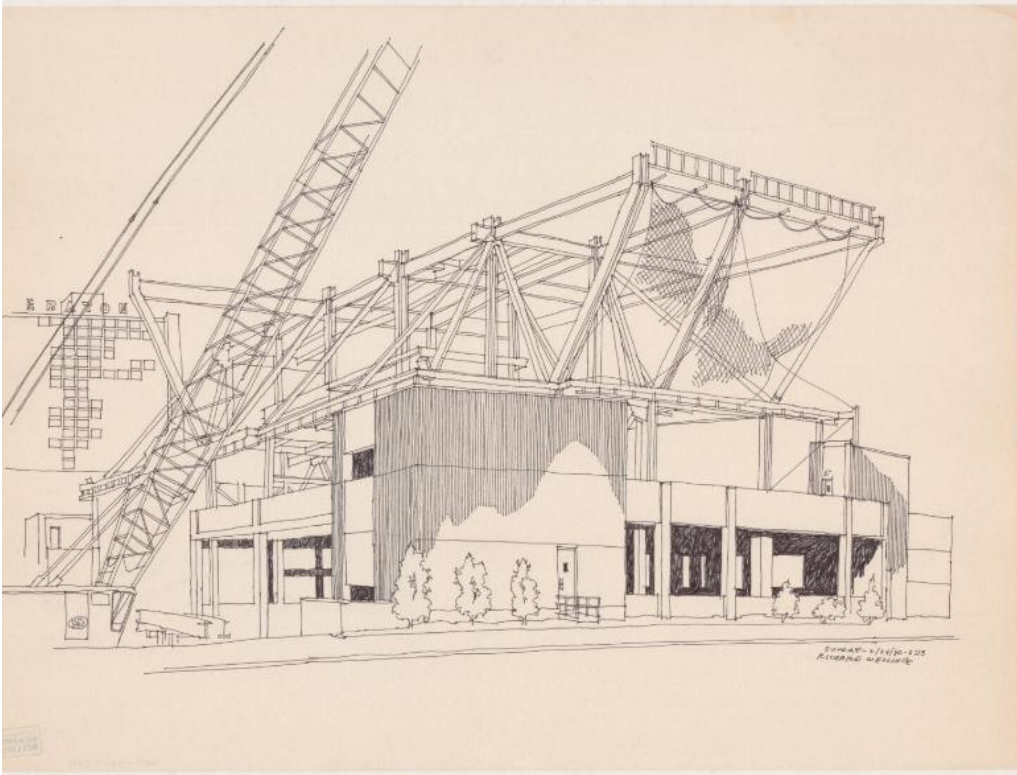


Basic Detail Report



Title Reconstruction of Civic Center Roof, Hartford, Connecticut

Date 1980

Primary Maker Richard Welling

Medium Drawing; black ink on paper

Description Drawing of the reconstruction of the Civic Center roof in Hartford, Connecticut, from a ground-level perspective. Construction work is visible above the building, and there is a crane on the left side. The Sheraton Hotel (subsequently the Hilton) is in the background.

Dimensions Primary Dimensions (image height x width): 16 x 22in. (40.6 x 55.9

cm) Sheet (height x width): 16 x 22in. (40.6 x 55.9cm)