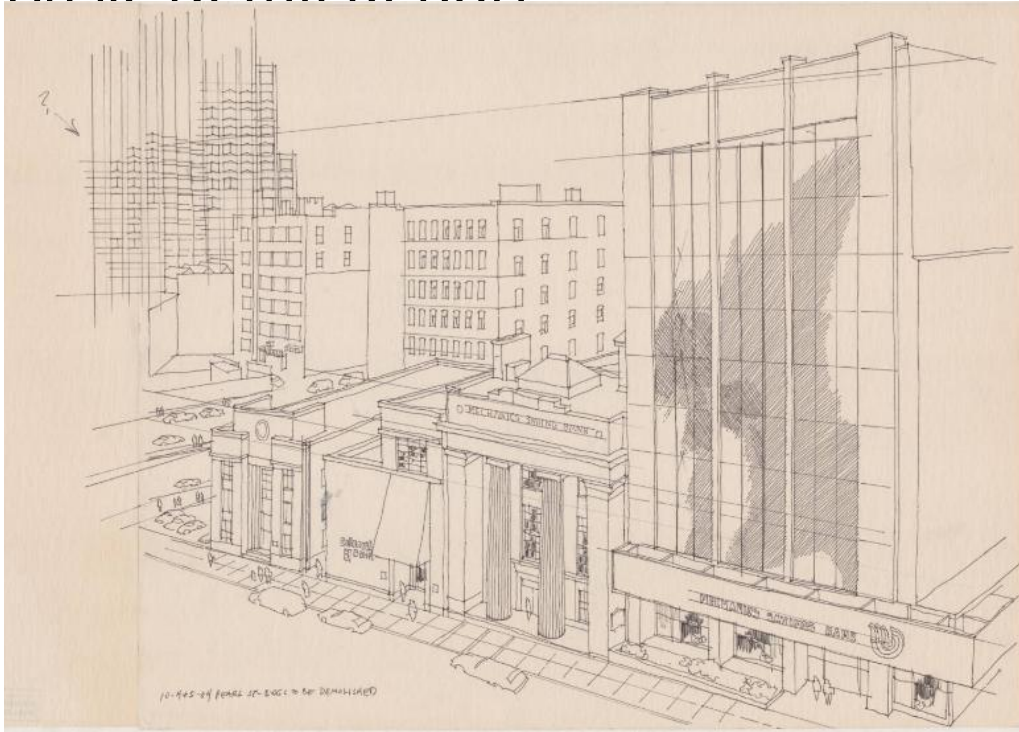


Basic Detail Report



Title Pearl Street Buildings to be Demolished

Date 1984

Primary Maker Richard Welling

Medium Drawing; black ink on paper

Description Drawing of buildings on Pearl Street in downtown, Hartford, Connecticut, including the Mechanics Savings Bank buildings, Colonial Bank, and the Corning Building on the corner of Trumbull Street. Trumbull Street is visible in the background, with City Place rising above the smaller buildings. The perspective is slightly elevated, looking down over the roofs of the low-rise buildings.

Dimensions Primary Dimensions (image height x width): 13 7/8 x 20 1/8in. (35.2 x 51.1cm) Sheet (height x width): 13 7/8 x 20 1/8in. (35.2 x 51.1cm)