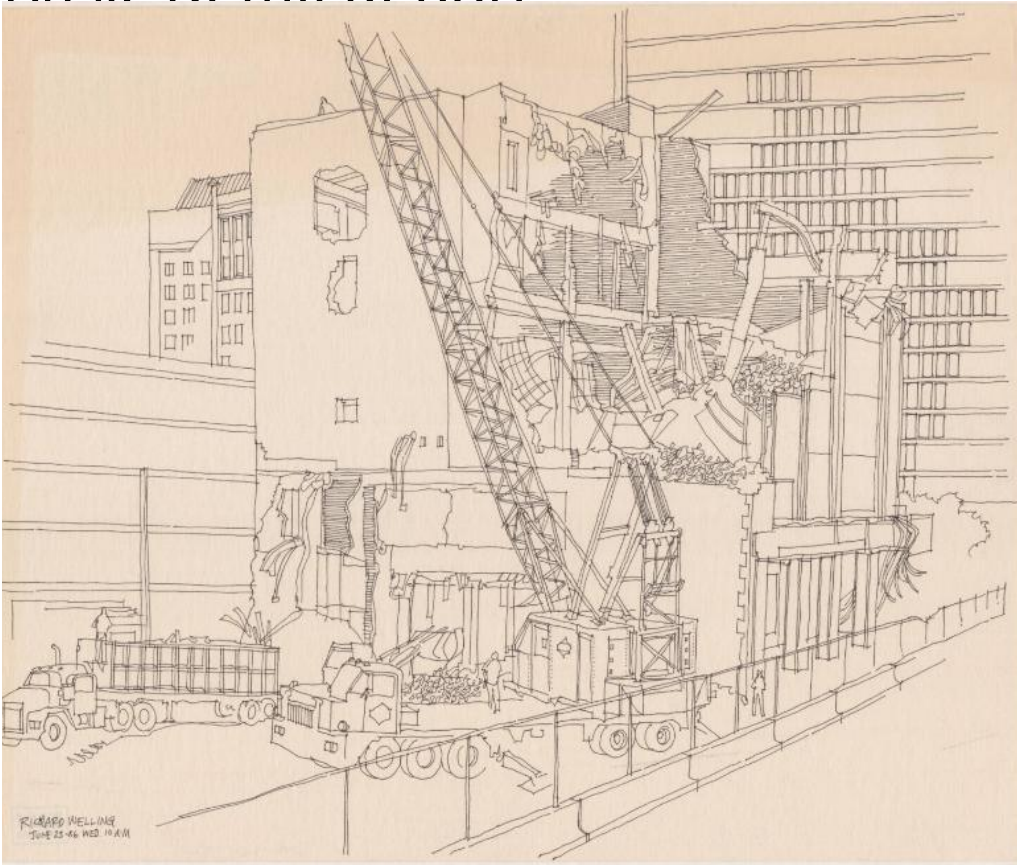


Basic Detail Report



Title Demolition on Pearl Street, Hartford, Connecticut

Date 1986

Primary Maker Richard Welling

Medium Drawing; black ink on paper

Description Drawing of the demolition of a building on what is likely Pearl Street in downtown Hartford, Connecticut. Construction machines are at work tearing down the building, which is already partly demolished with parts of its internal structure exposed. There are quoins visible on the corner of the building and what appear to be square pillars on the front. Construction workers are pictured on the site. The Connecticut National Bank is visible in the background.

Dimensions Primary Dimensions (image height x width): 13 7/8 x 17in. (35.2 x 43.2 cm) Sheet (height x width): 13 7/8 x 17in. (35.2 x 43.2cm)